

ACCESS TO GROUND FLOOR THROUGH SCAFFOLD TO BE CONSIDERED.

KICKER BASE LIFT DEPENDING ON UNDERBUILD HEIGHTS.

GROUND LEVEL.

**TWO STOREY**  
2587 floor to floor



GENERALLY SCAFFOLD BUILT AROUND ROOF CONSTRUCTED ON GROUND. HOP-UPS TO BE LEFT OFF UNTIL ROOF LIFTED OUT ON DAY OF KIT ERECT.

FALL PROTECTION.  
OXFORD MATTING TO BE INSTALLED TO TRUSS CHORD OR 2No. TIMBER SAFETY RAILS TO BE INSTALLED TO EAVES END OF RAFTERS.

ENSURE HOP-UPS ARE FAR ENOUGH AWAY FROM PANEL TO ALLOW PANELS TO BE STOOD.

INDICATIVE 775mm SHOWN TO ALLOW FOR 3No. 225mm BOARD HOP-UP PLUS 100mm TO ALLOW FOR CAVITY BARRIERS.

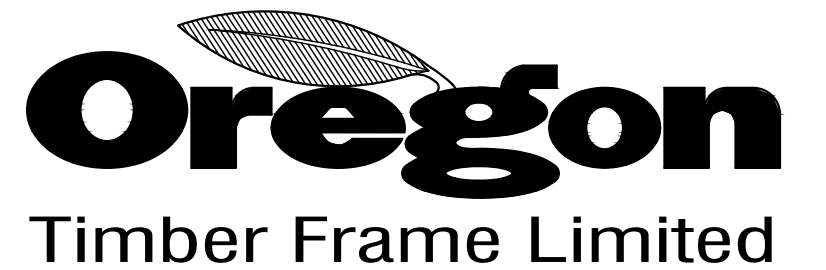
**STAGE 1 SCAFFOLDING:**

**\*\*IF ROOF IS BUILT ON THE SLAB\*\***

- 1st WORKING PLATFORM HEIGHT TO BE 800-850mm FROM SLAB.
- NO HOP-UPS TO BE FITTED TO ALLOW FOR ROOF BUILD AND LIFT.

LIFT HEIGHT AND HOP-UP PRINCIPLES APPLY TO TUBE AND FIT AND SYSTEM SCAFFOLDS.  
  
PLEASE REFER TO FULL SCAFFOLD DESIGN FOR DETAILED DESIGN

Amendments:



Portland Buildings Dunsdale Road  
Selkirk Scottish Borders TD7 5EB  
Tel. 01750 724940 Fax. 01750 725876

Project:  
STAGE 1 - GUIDANCE FOR  
TIMBER FRAME ERECT  
  
BARRATT HOMES

Drawing:  
BARRATT SCAFFOLD DETAIL  
2 STOREY HOUSE

Date: APR 2021	Drawn: OTF	Rev: -
Drawing No: OTF(2 STOREY HOUSE - SCAFFOLD-STG 1)		Scale: 1:16



**STAGE 2 SCAFFOLDING:**

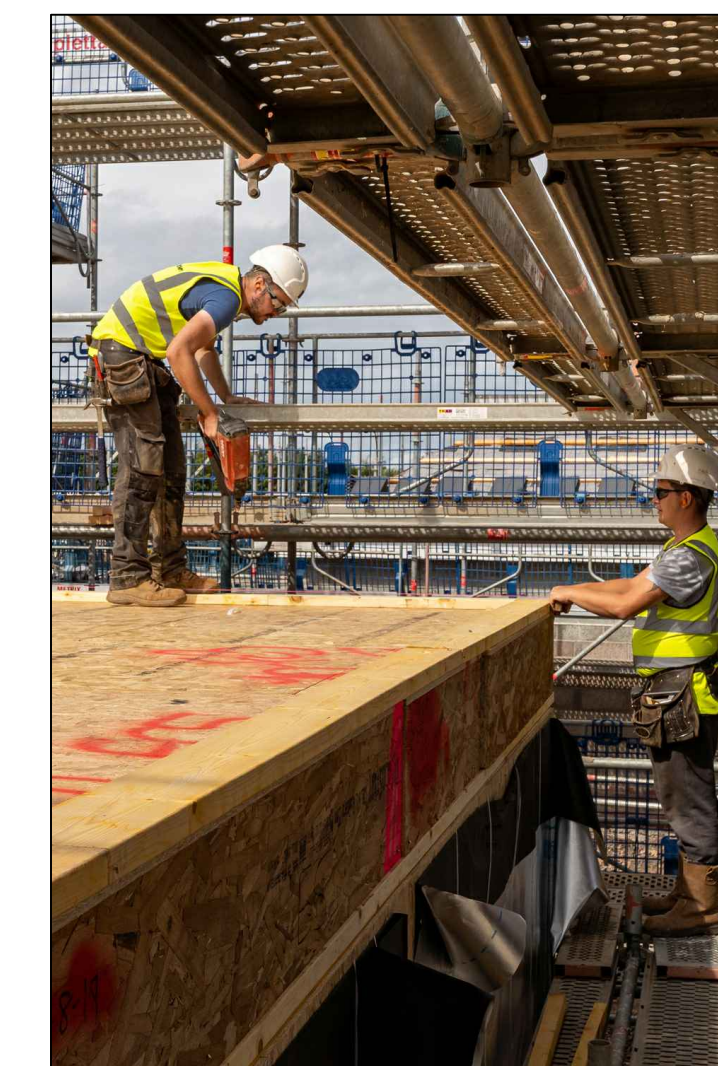
**\*\*APPLICABLE IF ROOF IS BUILT ON THE SLAB\*\***

**FOLLOWING ROOF BEING LIFTED OUT**

- HOP-UP 1 - TO BE SET 950mm BELOW TOP OF 'GF' WALL PANEL
- HOP-UP 2A - INSTALL TO ALLOW ACCESS FOR LANDING ROOF.
- HOP-UP 2B - ONE BAY HOP-UP TO BE LOCATED TO ALLOW ACCESS TO FIRST FLOOR CASSETTE. WHERE RELEVANT TO BE LOCATED AT UPPER FLOOR ACCESS PANEL LOCATION



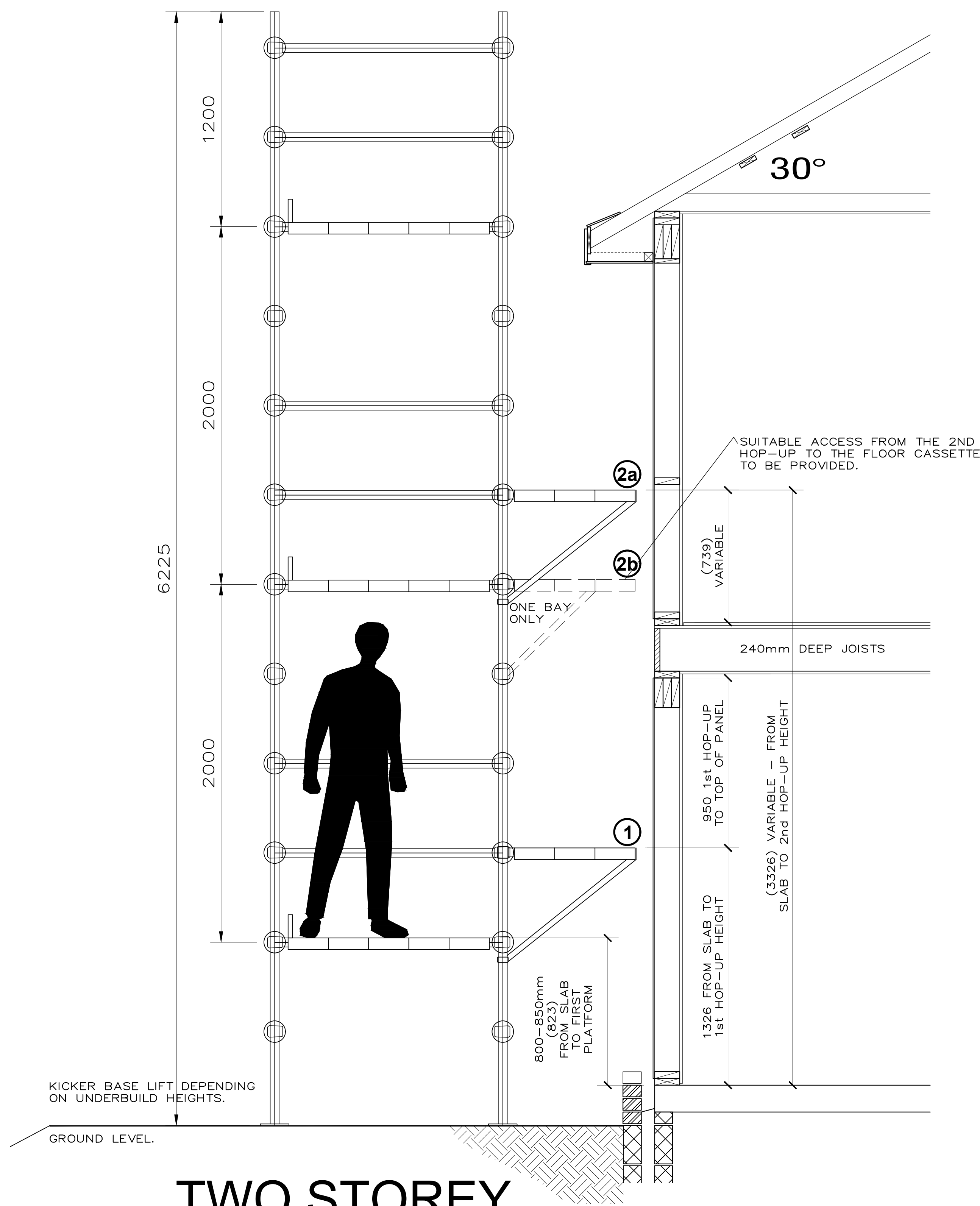
EXAMPLE IMAGE OF 2nd HOP-UP/3rd LIFT AT EAVES.



EXAMPLE IMAGE OF 1st & 2nd HOP-UPS AT FLOOR CASSETTE.



EXAMPLE IMAGE OF 1st HOP-UP/1st LIFT AT GROUND LEVEL.

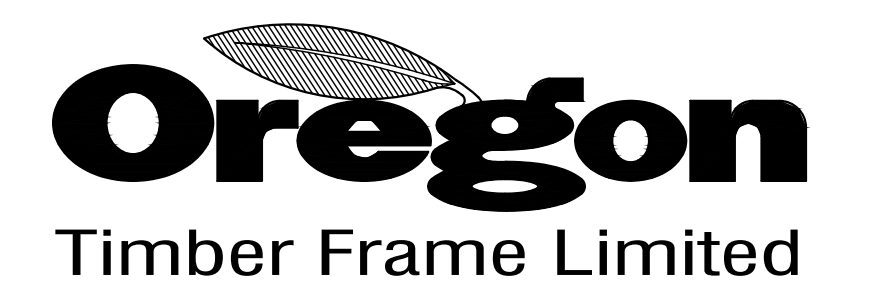


**TWO STOREY**  
2587 floor to floor

**LIFT HEIGHT AND HOP-UP PRINCIPLES APPLY TO TUBE AND FIT AND SYSTEM SCAFFOLDS.**

**PLEASE REFER TO FULL SCAFFOLD DESIGN FOR DETAILED DESIGN**

Amendments:



Portland Buildings Dunsdale Road  
Selkirk Scottish Borders TD7 5EB  
Tel. 01750 724940 Fax. 01750 725876

Project:  
STAGE 2 - GUIDANCE FOR  
TIMBER FRAME ERECT

BARRATT HOMES

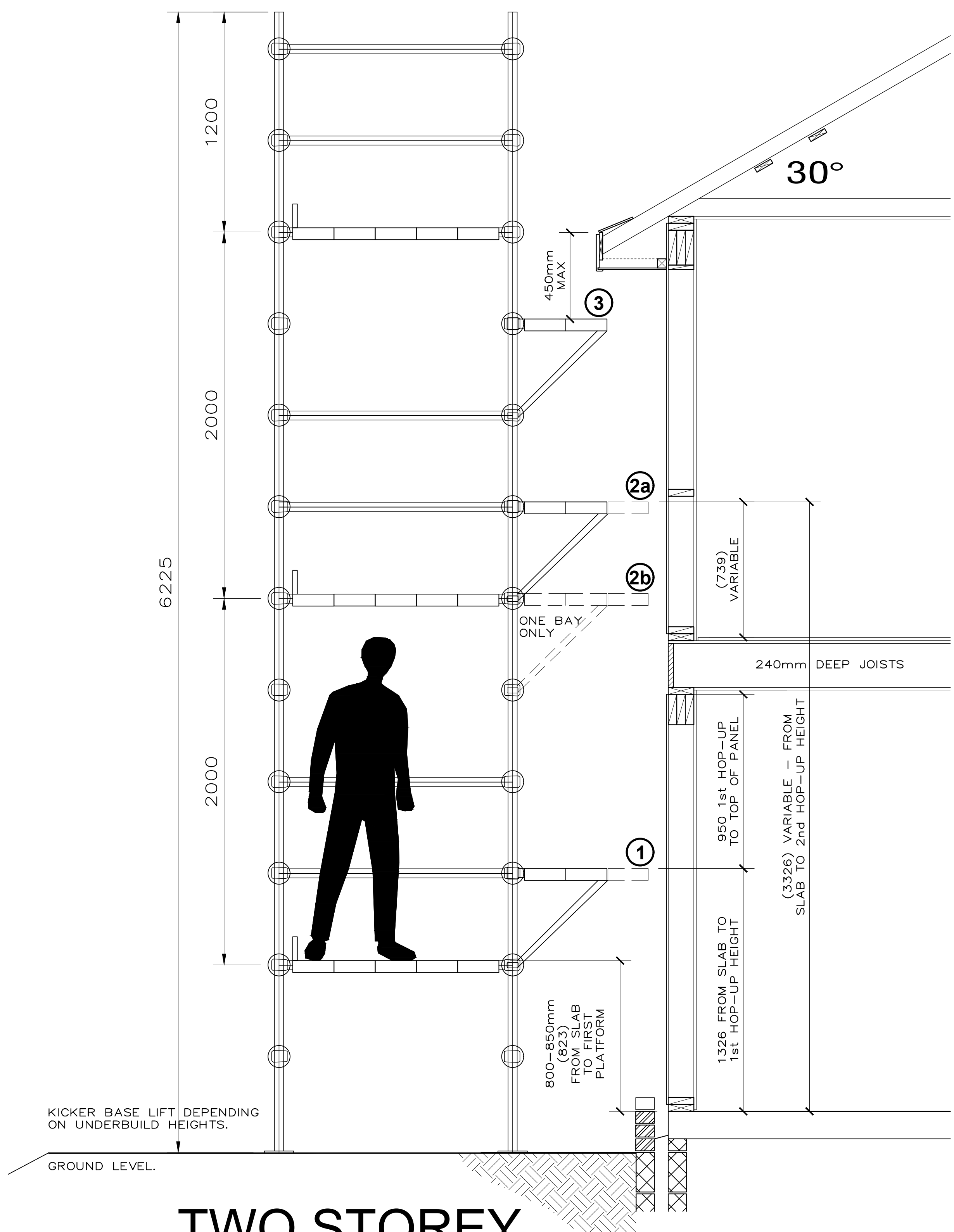
Drawing:  
BARRATT SCAFFOLD DETAIL  
2 STOREY HOUSE

Date: APR 2021	Drawn: OTF	Rev: -
-------------------	---------------	-----------

Drawing No: OTF(2 STOREY HOUSE - SCAFFOLD-STG 2)	Scale: 1:16
---	----------------



House Type:  
 STAGE 3 - INDICATIVE HEIGHTS  
 TO SUIT FOLLOW ON TRADES



**TWO STOREY**  
 2587 floor to floor

**STAGE 3 SCAFFOLDING:**

**FOLLOWING ROOF AND UPVC**

- HOP-UP 3 - INSTALLED BELOW EAVES, REDUCED WIDTH. TO BE REMOVED TO SUIT BRICKLAYER.

**ONCE TIMBER FRAME WORK IS COMPLETE**

- HOP-UPS ADDED/REDUCED/REMOVED TO SUIT SEQUENCING OF BRICKWORK CONSTRUCTION.
- HOP-UP 1 - TO BE REMOVED/ADJUSTED AND SECTION OF FIRST LIFT TO BE REMOVED TO ALLOW ACCESS FOR BRICKWORK.
- DASHED BOARDS INDICATE HOP UP WIDTH REDUCTION AS MASONRY IS BUILT.

- FULL HEIGHT OF SCAFFOLDING BUILT UP TO SUITABLE HEIGHT.
- 1st WORKING PLATFORM HEIGHT TO BE 800-850mm FROM SLAB
- ADJUSTABLE TRANSOMS OR SIMILAR TO BE CONSIDERED.
- TIED TO TIMBER FRAME AS REQUIRED BY SITE SPECIFIC SCAFFOLD DESIGN.

LIFT HEIGHT AND HOP-UP PRINCIPLES APPLY TO TUBE AND FIT AND SYSTEM SCAFFOLDS.  
 PLEASE REFER TO FULL SCAFFOLD DESIGN FOR DETAILED DESIGN

Amendments:

**Oregon**  
 Timber Frame Limited

Portland Buildings Dunsdale Road  
 Selkirk Scottish Borders TD7 5EB  
 Tel. 01750 724940 Fax. 01750 725876

Project:  
 STAGE 3 - GUIDANCE FOR FOLLOW ON TRADES  
 BARRATT HOMES

Drawing:  
 BARRATT SCAFFOLD DETAIL  
 2 STOREY HOUSE

Date: APR 2021	Drawn: OTF	Rev: -
Drawing No: OTF(2 STOREY HOUSE - SCAFFOLD-STG 3)		Scale: 1:16