

House Type:
 STAGE 1 - TIMBER FRAME ERECT
 (ROOF BUILT ON SLAB)

STAGE 1 SCAFFOLDING:

****IF ROOF IS BUILT ON THE SLAB****

- **1st WORKING PLATFORM HEIGHT TO BE 800-850mm FROM SLAB.**
- **NO HOP-UPS TO BE FITTED TO ALLOW FOR ROOF BUILD AND LIFT.**
- **SCAFFOLD NOT BUILT TO FULL HEIGHT TO ALLOW PANELS AND CASSETTES TO BE LANDED.**



GENERALLY SCAFFOLD BUILT AROUND ROOF CONSTRUCTED ON GROUND. HOP-UPS TO BE LEFT OFF UNTIL ROOF LIFTED OUT ON DAY OF KIT ERECT.

LIFT HEIGHT AND HOP-UP PRINCIPLES APPLY TO TUBE AND FIT AND SYSTEM SCAFFOLDS.

PLEASE REFER TO FULL SCAFFOLD DESIGN FOR DETAILED DESIGN

Amendments:
 A: 14:04:22 SECTION UPDATED TO SUIT THE UPDATED BARRATT STANDARD 3 STOREY APARTMENT BLOCK. S.J.M.

Oregon
 Timber Frame Limited

Portland Buildings Dunsdale Road
 Selkirk Scottish Borders TD7 5EB
 Tel. 01750 724940 Fax. 01750 725876

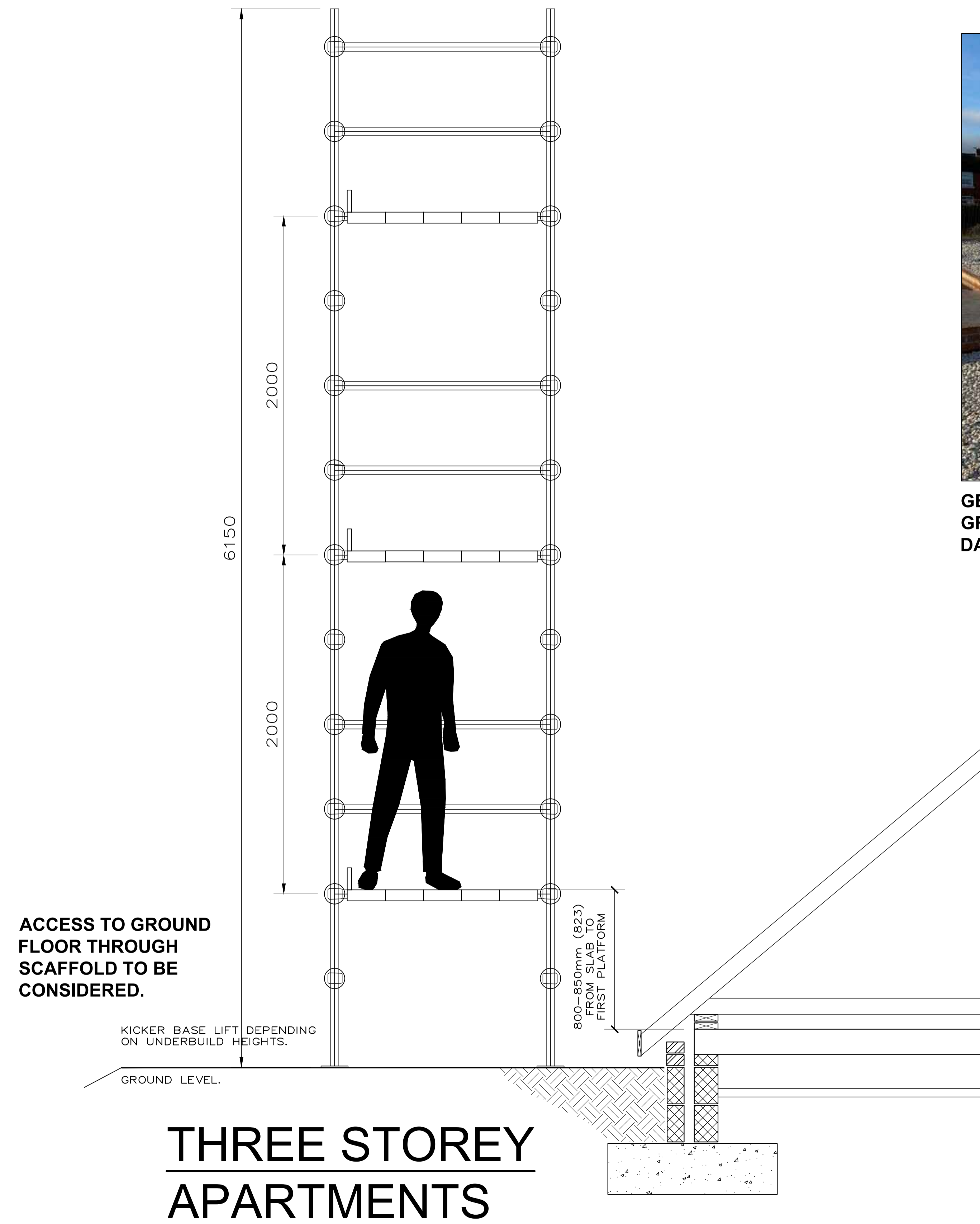
Project:
 STAGE 1 - GUIDANCE FOR
 TIMBER FRAME ERECT

BARRATT HOMES

Drawing:
 BARRATT SCAFFOLD DETAIL
 3 STOREY APARTMENT

Date: SEPT 2021	Drawn: OTF	Rev: A
--------------------	---------------	-----------

Drawing No: OTF(3 STOREY APT. - SCAFFOLD-STG 1)	Scale: 1:16
--	----------------

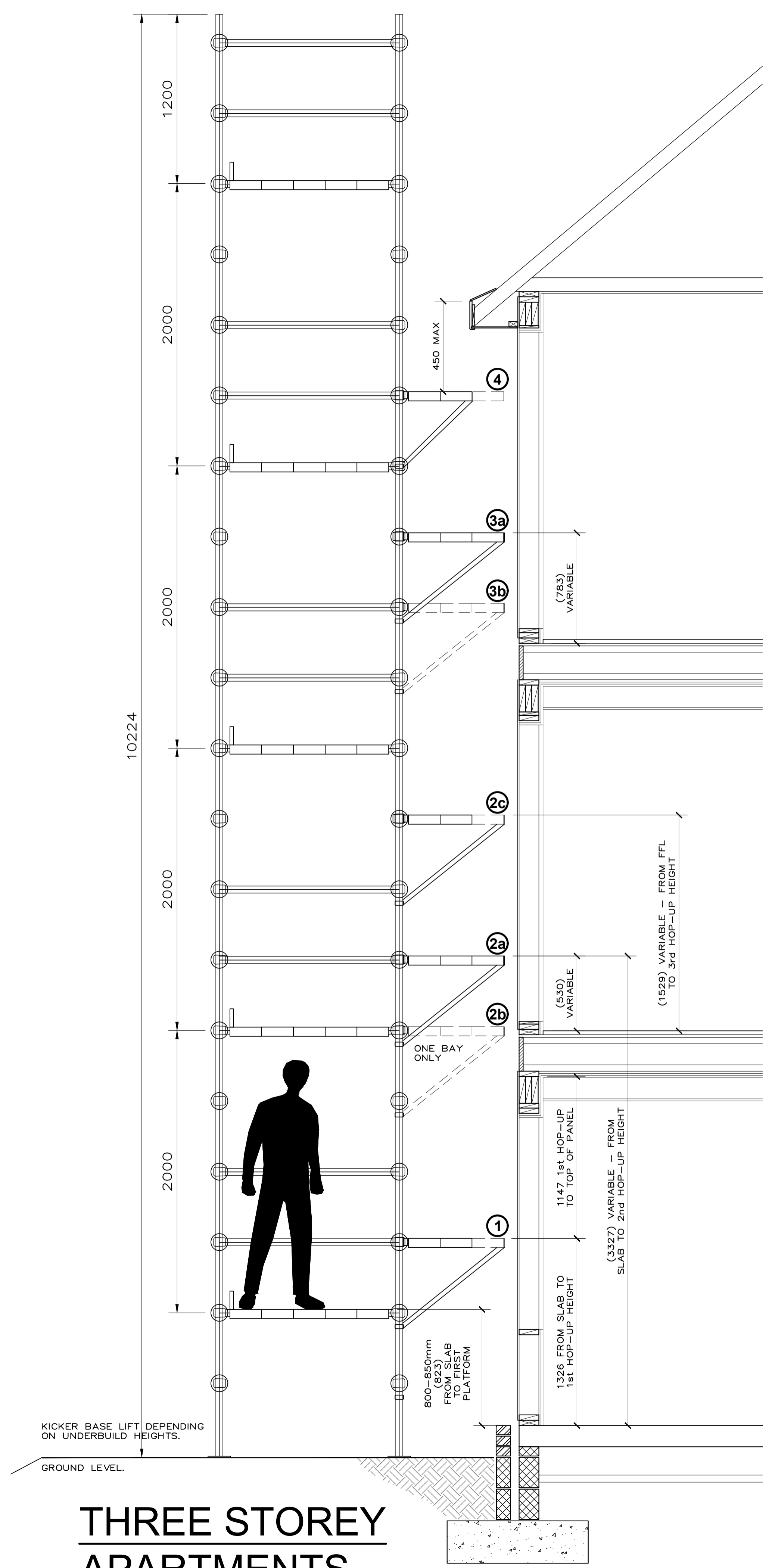


**THREE STOREY
 APARTMENTS**

FALL PROTECTION.
 OXFORD MATTING TO BE INSTALLED TO TRUSS CHORD OR 2No. TIMBER SAFETY RAILS TO BE INSTALLED TO EAVES END OF RAFTERS.

ENSURE HOP-UPS ARE FAR ENOUGH AWAY FROM PANEL TO ALLOW PANELS TO BE STOOD.

INDICATIVE 775mm SHOWN TO ALLOW FOR 3No. 225mm BOARD HOP-UP PLUS 100mm TO ALLOW FOR CAVITY BARRIERS.



STAGE 2 SCAFFOLDING:

****APPLICABLE IF ROOF IS BUILT ON THE SLAB****

COORDINATION OF SEQUENCING OF HOP-UP MOVEMENTS WITH INSTALLATION OF WALL PANEL AND FLOOR CASSETTES IS CRITICAL

FOLLOWING ROOF BEING LIFTED OUT

- HOP-UP 1 - TO BE SET 950mm BELOW TOP OF 'GF' WALL PANEL.
- HOP-UP 2A - INSTALL TO PROVIDE EDGE PROTECTION FOR LANDING FIRST FLOOR WALLS
- HOP-UP 2B - ONE BAY HOP-UP TO BE LOCATED TO ALLOW ACCESS TO FIRST FLOOR CASSETTE. WHERE RELEVANT TO BE LOCATED AT UPPER FLOOR ACCESS PANEL LOCATION. (SHOWN DASHED AT 'FF' CASSETTE LAYOUT)

FOLLOWING FIRST FLOOR WALLS

- HOP-UP 2C - MOVE HOP-UP 2A UP TO ALLOW ACCESS FOR LANDING 2nd FLOOR CASSETTE.

FOLLOWING SECOND FLOOR CASSETTES

- HOP-UP 3A - INSTALLED TO ALLOW ACCESS FOR LANDING THE ROOF, INSTALLING uPVC AND PROVIDE EDGE PROTECTION.
- HOP-UP 3B - ONE BAY HOP-UP TO BE LOCATED TO ALLOW ACCESS TO SECOND FLOOR CASSETTE. WHERE RELEVANT TO BE LOCATED AT UPPER FLOOR ACCESS PANEL LOCATION. (SHOWN DASHED AT 'SF' CASSETTE LAYOUT)

FOLLOWING INSTALLATION OF ROOF AND UPVC

- HOP-UP 3B - HOP-UP 3A DROPPED FOR FOLLOW ON TRADES

FOLLOWING ADJUSTMENT OF HOP-UP BELOW TO POSITION 3B

- HOP-UP 4 - INSTALLED BELOW EAVES, REDUCED WIDTH TO ALLOW ACCESS FOR ROOFER. 450mm MAX. FROM TOP OF FASCIA TO HOP-UP

ONCE TIMBER FRAME WORK IS COMPLETE

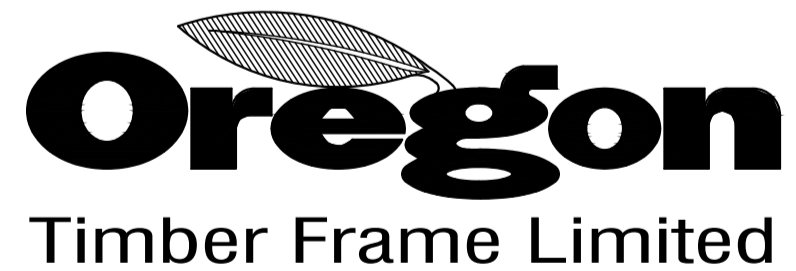
- HOP-UPS ADDED/REDUCED/REMOVED TO SUIT SEQUENCING OF MASONRY CONSTRUCTION.
- HOP-UP 1 - TO BE REMOVED/ADJUSTED AND SECTION OF FIRST LIFT TO BE REMOVED TO ALLOW ACCESS FOR MASONRY.
- DASHED BOARDS INDICATE HOP-UP WIDTH REDUCTION AS MASONRY IS BUILT.

- SCAFFOLDING NOT FULLY BUILT UNTIL 1st & 2nd FLOOR PANELS ARE ERECTED
- FULL HEIGHT OF SCAFFOLDING BUILT UP TO SUITABLE HEIGHT.
- TABLE LIFT AND EDGE PROTECTION TO THE GABLES AS REQUIRED TO FACILITATE ACCESS TO THE RIDGE. ROOF EDGE PROTECTION TO BE TIED TO MAIN SCAFFOLD ALLOWING FOR VERGE DETAIL TO BE COMPLETED. TO BE IN PLACE ONCE ROOF LANDED.
- 1st WORKING PLATFORM HEIGHT TO BE 800-850mm FROM SLAB.
- ADJUSTABLE TRANSOMS OR SIMILAR TO BE CONSIDERED.
- TIED TO TIMBER FRAME AS REQUIRED BY SITE SPECIFIC SCAFFOLD DESIGN.

LIFT HEIGHT AND HOP-UP PRINCIPLES APPLY TO TUBE AND FIT AND SYSTEM SCAFFOLDS.

PLEASE REFER TO FULL SCAFFOLD DESIGN FOR DETAILED DESIGN

Amendments:
A: 14:04:22 SECTION UPDATED TO SUIT THE UPDATED BARRATT STANDARD 3 STOREY APARTMENT BLOCK. S.M.



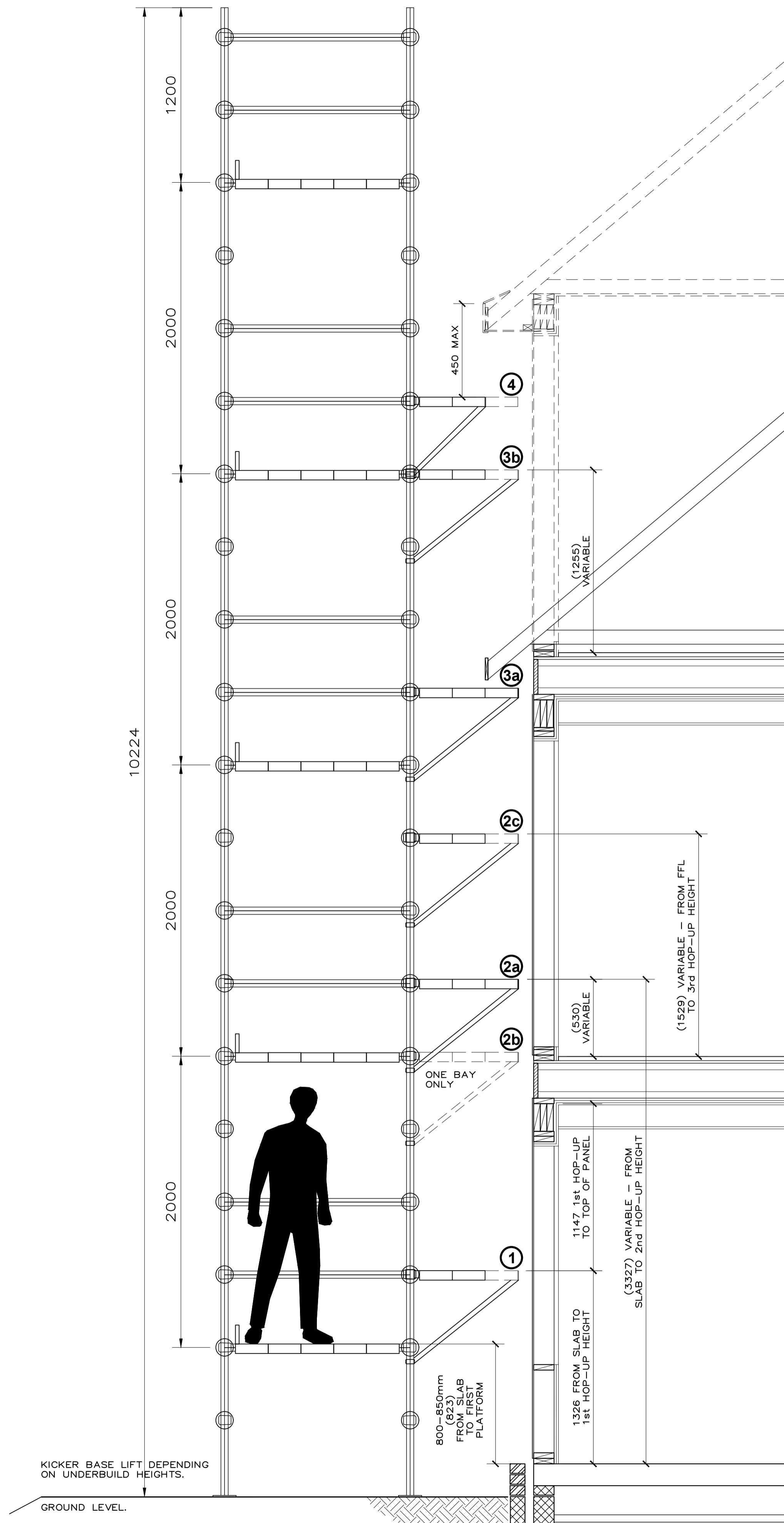
Portland Buildings Dunsdale Road
Selkirk Scottish Borders TD7 5EB
Tel. 01750 724940 Fax. 01750 725876

Project:
STAGE 2 - GUIDANCE FOR TIMBER FRAME ERECT
BARRATT HOMES

Drawing:
BARRATT SCAFFOLD DETAIL
3 STOREY APARTMENT

Date: SEPT 2021	Drawn: OTF	Rev: A
Drawing No: OTF(3 STOREY APT. - SCAFFOLD-STG 2)		Scale: 1:20

House Type:
 STAGE 1(A) - IF ROOF IS BUILT
 ON 2nd FLOOR CASSETTES



FALL PROTECTION.
 OXFORD MATTING TO BE
 INSTALLED TO TRUSS
 CHORD OR 2No. TIMBER
 SAFETY RAILS TO BE
 INSTALLED TO EAVES END
 OF RAFTERS.

STAGE 1(A) SCAFFOLDING:

****IF ROOF IS BUILT ON 2nd FLOOR CASSETTES****

COORDINATION OF SEQUENCING OF HOP-UP MOVEMENTS WITH
 INSTALLATION OF WALL PANEL AND FLOOR CASSETTES IS
 CRITICAL

PRE-KIT ERECT

- HOP-UP 1 - TO BE SET 950mm BELOW TOP OF 'GF' WALL PANEL.
- HOP-UP 2A - INSTALL TO ALLOW ACCESS FOR LANDING 2nd FLOOR CASSETTES.
- HOP-UP 2B - ONE BAY HOP-UP TO BE LOCATED TO ALLOW ACCESS TO FIRST FLOOR CASSETTE. WHERE RELEVANT TO BE LOCATED AT UPPER FLOOR ACCESS PANEL LOCATION. (SHOWN DASHED AT 'FF' CASSETTE LAYOUT)

FOLLOWING FIRST FLOOR WALLS

- HOP-UP 2C - MOVE HOP-UP 2A UP TO ALLOW ACCESS FOR LANDING 2nd FLOOR CASSETTE.

FOLLOWING SECOND FLOOR CASSETTES

- HOP-UP 3A - INSTALLED TO ALLOW ACCESS FOR BUILDING THE ROOF AND FOLLOWING ROOF BEING LIFTED OUT AND STANDING THE 2nd FLOOR WALLS

FOLLOWING ROOF BEING LIFTED OUT AND INSTALLATION OF 2nd FLOOR WALLS

- HOP-UP 3B - HOP-UP 3A RAISED TO ALLOW ACCESS FOR LANDING ROOF AND INSTALLING UPVC FACIA AND SOFFIT. LEAVE ONE SECTION IN POSITION 3A WHERE RELEVANT TO ALLOW ACCESS TO ACCESS PANEL.

FOLLOWING INSTALLATION OF ROOF AND UPVC

- HOP-UP 4 - INSTALLED BELOW EAVES, REDUCED WIDTH TO ALLOW ACCESS FOR ROOFER. 450mm MAX. FROM TOP OF FASCIA TO HOP-UP

ONCE TIMBER FRAME WORK IS COMPLETE

- HOP-UPS ADDED/REDUCED/REMOVED TO SUIT SEQUENCING OF MASONRY CONSTRUCTION.
- HOP-UP 1 - TO BE REMOVED/ADJUSTED AND SECTION OF FIRST LIFT TO BE REMOVED TO ALLOW ACCESS FOR MASONRY.
- DASHED BOARDS INDICATE HOP-UP WIDTH REDUCTION AS MASONRY IS BUILT.

- SCAFFOLDING NOT FULLY BUILT UNTIL 1st & 2nd FLOOR PANELS ARE ERECTED
- FULL HEIGHT OF SCAFFOLDING BUILT UP TO SUITABLE HEIGHT.
- TABLE LIFT AND EDGE PROTECTION TO THE GABLES AS REQUIRED TO FACILITATE ACCESS TO THE RIDGE. ROOF EDGE PROTECTION TO BE TIED TO MAIN SCAFFOLD ALLOWING FOR VERGE DETAIL TO BE COMPLETED. TO BE IN PLACE ONCE ROOF LANDED.
- 1st WORKING PLATFORM HEIGHT TO BE 800-850mm FROM SLAB.
- ADJUSTABLE TRANSOMS OR SIMILAR TO BE CONSIDERED.
- TIED TO TIMBER FRAME AS REQUIRED BY SITE SPECIFIC SCAFFOLD DESIGN.

LIFT HEIGHT AND HOP-UP
 PRINCIPLES APPLY TO
 TUBE AND FIT AND SYSTEM
 SCAFFOLDS.
 PLEASE REFER TO FULL
 SCAFFOLD DESIGN FOR
 DETAILED DESIGN

Amendments:
 A: 14:04:22 SECTION UPDATED TO SUIT THE S.M.
 UPDATED BARRATT STANDARD 3
 STOREY APARTMENT BLOCK.

Oregon
 Timber Frame Limited

Portland Buildings Dunsdale Road
 Selkirk Scottish Borders TD7 5EB
 Tel. 01750 724940 Fax. 01750 725876

Project:
 STAGE 1(A) - GUIDANCE FOR
 FOLLOW ON TRADES
 BARRATT HOMES

Drawing:
 BARRATT SCAFFOLD DETAIL
 3 STOREY APARTMENT

Date: SEPT 2021	Drawn: OTF	Rev: A
Drawing No: OTF(3 STOREY APT. - SCAFFOLD-STG 1(A))		Scale: 1:20

**THREE STOREY
 APARTMENTS**