

GENERAL NOTES.

1. THIS DRAWING IS CONFIDENTIAL AND THE EXCLUSIVE PROPERTY OF GAN SCAFF LTD. NO UNAUTHORISED USE, COPY OR DISCLOSURE IS TO BE MADE.
2. THIS DRAWING HAS BEEN PREPARED FROM INFORMATION SUPPLIED BY THE CUSTOMER. THE CONTRACTOR WHO SHOULD CHECK THAT HIS EQUIPMENTS HAVE BEEN CORRECTLY INTERPRETED AND THAT ALL LOADINGS, DIMENSIONS, LIFT HEIGHTS, BAY SIZES, THE POSITIONS AND TYPE, ERECTION/STRIKING SEQUENCES ARE AS REQUIRED AND PRACTICABLE.
3. THE FOLLOWING DRAWINGS HAVE BEEN USED TO PREPARE THIS SCHEME:

3. UNLESS NOTED OTHERWISE THE SCAFFOLD IS DESIGNED USING TG20:21.

4. THE CUSTOMER IS RESPONSIBLE FOR ENSURING THAT THE FOUNDATIONS AND THE POSITIONS PROVIDED FOR THE SCAFFOLDING ARE ADEQUATE TO SAFELY SUPPORT THE LOADS SHOWN ON THIS DRAWING OR ASSOCIATED CALCULATIONS.
5. NO ALTERATION IS TO BE MADE TO THE STRUCTURE DETAILED ON THIS DRAWING.
6. THE CUSTOMER IS RESPONSIBLE FOR THE SETTING OUT OF THE SCAFFOLDING.
7. THE CUSTOMER IS RESPONSIBLE FOR OBTAINING ALL PERMITS AND PERMISSIONS PRIOR TO COMMENCING WORK.
8. ALL DIMENSIONS ARE IN MM
9. UNLESS NOTED OTHERWISE THE MAXIMUM LIFT HEIGHT MUST NOT EXCEED 2000MM.
10. THE MAXIMUM IMPOSED LOAD ACTING ON THE MAIN PLATFORM MUST NOT EXCEED AS NOTED KN/M²
11. UNLESS NOTED OTHERWISE ALL CONNECTIONS OTHER THAN BOARDED PLATFORMS WILL BE MADE USING LOAD BEARING COUPLERS.

12. ALL LADDERS ARE TO BE FIXED SECURELY. IT IS RECOMMENDED THAT LADDERS ARE FIXED AT AN ANGLE OF 75° OR 4 VERTICAL TO 1 HORIZONTAL. IT IS RECOMMENDED THAT THE LADDER PROJECTS 1050MM ABOVE THE LANDING PLATFORM.

13. MODULAR BEAMS ARE TO BE LACED AND BRACED IN ACCORDANCE WITH THE MANUFACTURERS RECOMMENDATIONS

14. ALL SYSTEM SCAFFOLDING, INCLUDING STAIR TOWERS ARE TO BE ERECTED IN ACCORDANCE WITH THE MANUFACTURERS RECOMMENDATIONS AND BE FIT FOR THE PURPOSES THAT THEY ARE INTENDED FOR

15. SUPPLEMENTARY/CHECK FITTING POSITIONS ARE SHOWN THUS: **X** ON THE DRAWING

16. NO TEMPORARY ROOF CAN BE MADE WATERTIGHT.

17. A SNOW MANAGEMENT SYSTEM IS TO BE IMPLEMENTED BY THE CUSTOMER WHERE THE CUSTOMER IS UNABLE TO IMPLEMENT SUCH A MANAGEMENT SYSTEM THEN THEY SHOULD INFORM CAD STAFF WHO WILL DESIGN FOR SNOW LOADING.

18. WHEN KNOWLEDGE OR ANCHORAGE IS SPECIFIED ON THE DRAWING, IT MUST BE INSTALLED AT THE FEARLEST CONVENIENT OPPORTUNITY, AND MUST BE COMPLETED PRIOR TO SHEETING.

19. THE CUSTOMER IS TO ENSURE THAT A SAFE SYSTEM OF WORKING IS ADOPTED AT ALL STAGES OF THE SCAFFOLDING ERECTION AND DISMANTLE

20. THE CUSTOMER IS TO PROVIDE AN OPERATIONAL RISK ASSESSMENT WHICH IS TO INCLUDE FOR HAZARDS ASSOCIATED WITH THE ERECTION OF SCAFFOLDING SHOWN ON THIS DRAWING

CDM REGULATIONS 2015.

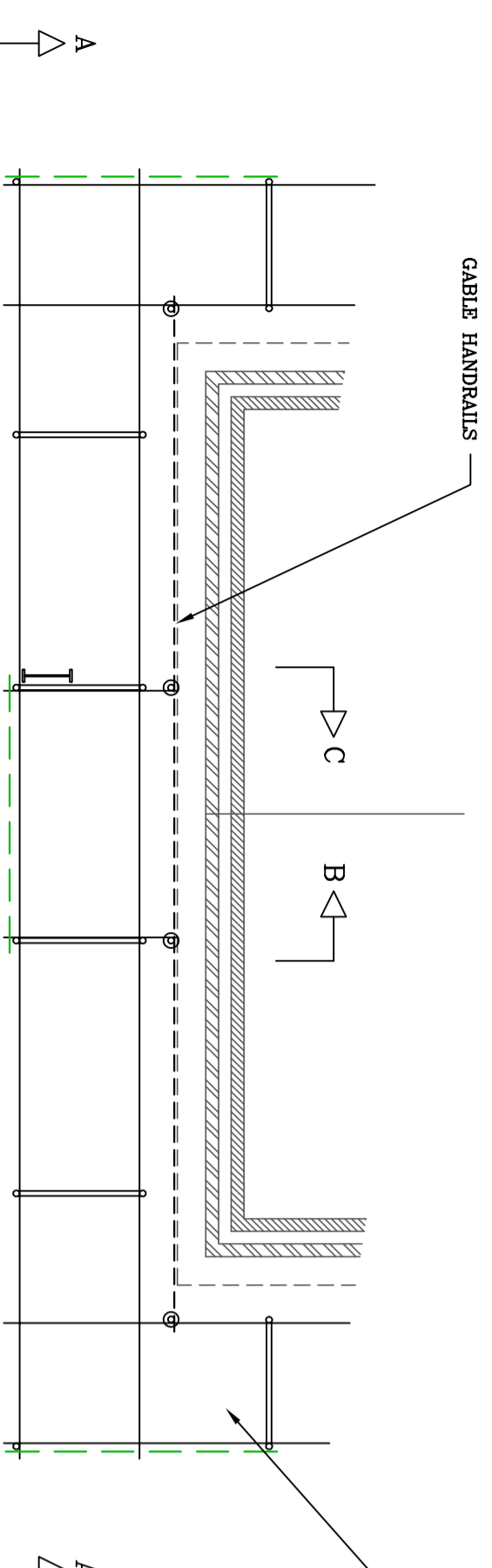
THE CONSTRUCTION (DESIGN AND MANAGEMENT) REGULATIONS 2015, REQUIRE THAT WE MAKE CUSTOMERS AWARE OF THEIR DUTIES AND RESPONSIBILITIES. THESE DUTIES AND RESPONSIBILITIES ARE SUBSIBED BY THE HSE IN THE FORM OF AN APPROVED CODE OF PRACTICE.

THE SCAFFOLDERS WILL RESCT THE SCAFFOLDING IN ACCORDANCE WITH THE REQUIREMENTS OF GUIDANCE NOTE SP4:15

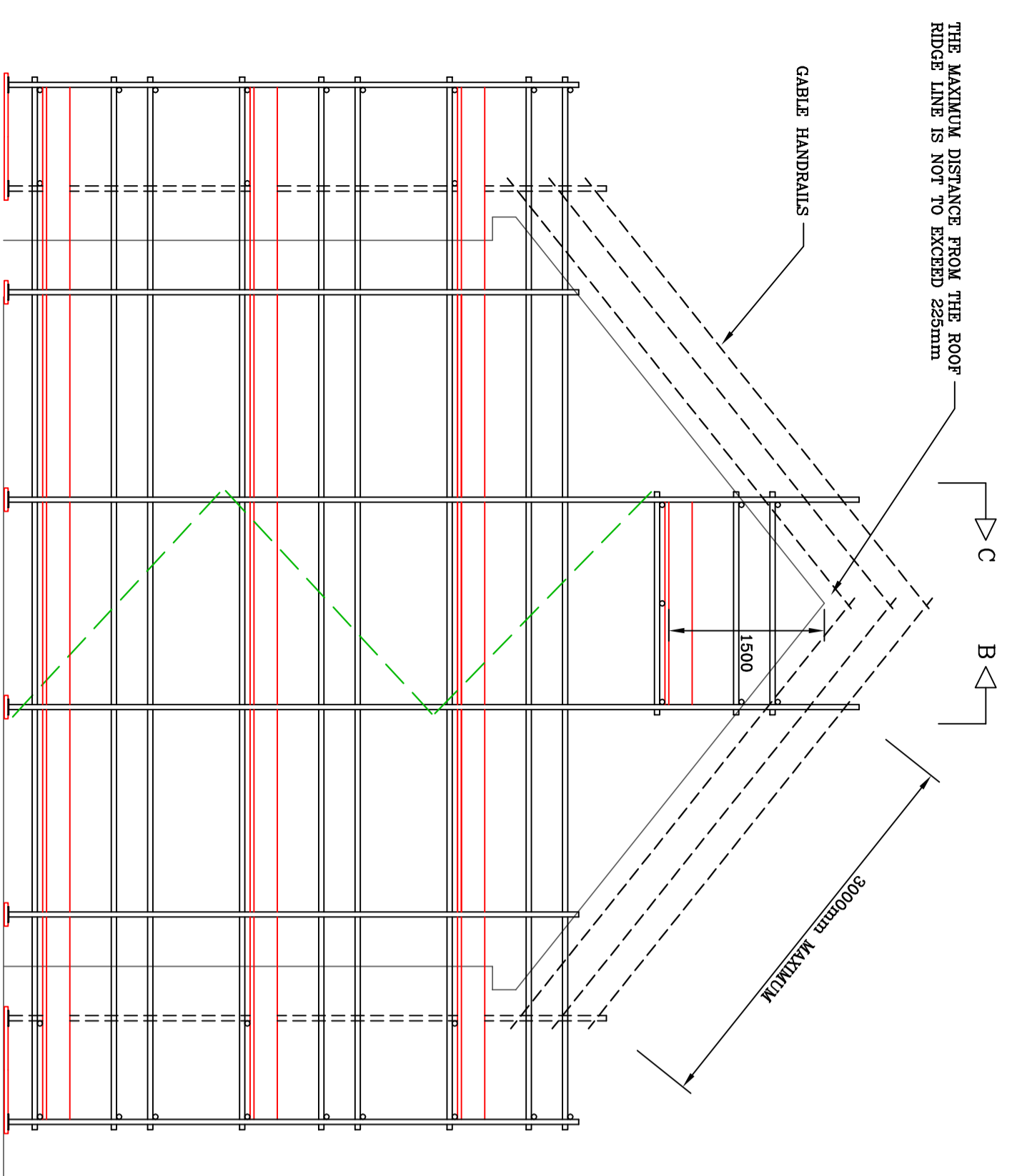
THIS SCAFFOLD HAS BEEN DESIGNED USING TG20:21

ALL DIMENSIONS ARE APPROXIMATE AND ARE TO BE CONFIRMED ON SITE

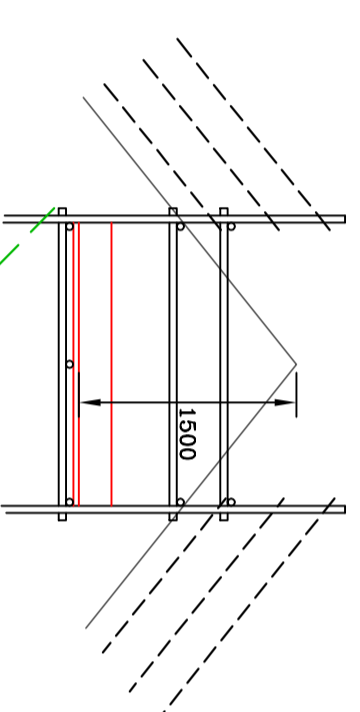
ACCESS SCAFFOLD TO BE ERECTED IN ACCORDANCE WITH THE BARBARTT ACCESS SCAFFOLD DESIGN



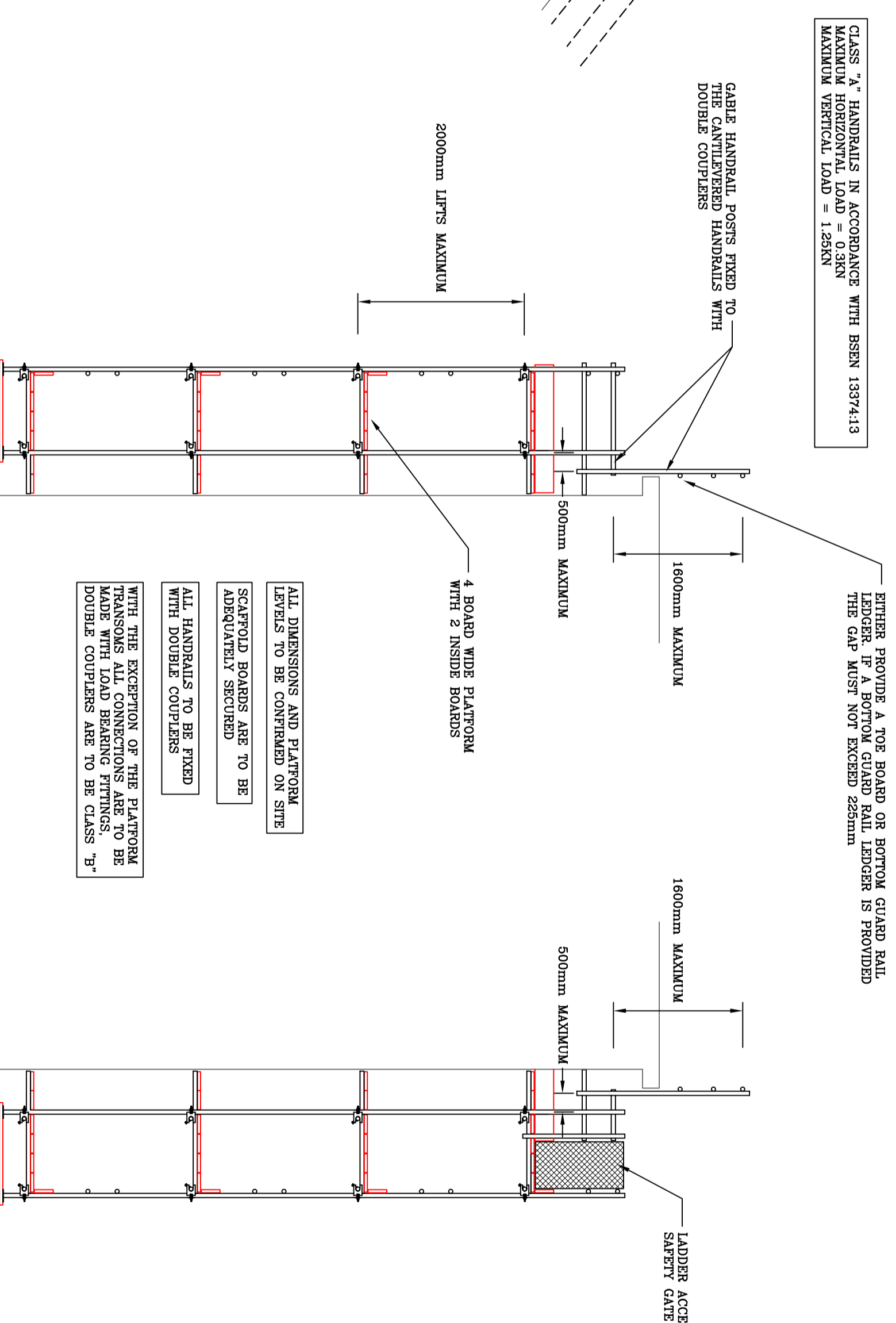
PART PLAN LAYOUT



ELEVATION A-A



HANDRAIL EXTENT ALTERNATIVE



GABLE SECTION B-B

GABLE SECTION C-C

CLASS 'A' HANDRAILS IN ACCORDANCE WITH BS EN 13974-1:3
MAXIMUM HORIZONTAL LOAD = 0.3KN
MAXIMUM VERTICAL LOAD = 1.25KN

EITHER PROVIDE A TOP BOARD OR BOTTOM GUARD RAIL
WHICH IS TO BE SECURED TO THE MAIN LADDER IS PROVIDED
THE GAP MUST NOT EXCEED 225MM

CABLE HANDRAIL POSTS FIXED TO
THE CANTILEVERED HANDRAILS WITH
DOUBLE COUPLERS

2000mm LIFTS MAXIMUM

500mm MAXIMUM

1600mm MAXIMUM

4 BOARD WIDE PLATFORM
WITH 2 INSIDE BOARDS

ALL DIMENSIONS AND PLATFORM
LEVELS TO BE CONFIRMED ON SITE
SCAFFOLD BOARDS ARE TO BE
ADEQUATELY SECURED
ALL HANDRAILS TO BE FIXED
WITH DOUBLE COUPLERS
WITH THE EXCEPTION OF THE PLATFORM
TRANSOMS ALL CONNECTIONS ARE TO BE
MADE USING DOUBLE COUPLERS TO THE CLASS 'B'
DOUBLE COUPLERS ARE TO BE CLASS 'B'

500mm MAXIMUM

1600mm MAXIMUM

500mm MAXIMUM

LADDER ACCESS
SAFETY GATE

REV	DESCRIPTION	BY	DATE

GAN SCAFF LTD

REGISTRATION No: 06510282

REGISTERED OFFICE: 32 HIGH STREET, WALL HEATH,
KINGSWINFORD, WEST MIDLANDS, DY6 0HB.

TELEPHONE: 01902 677 014

MOBILE: 07794 235 597

EMAIL: design@gcdcaff.co.uk

PREPARED ON BEHALF OF: BARBARTT DEVELOPMENTS PLC.

TITLE: TYPICAL GABLE END HANDRAILS

DRAWN: I WILSON

SCALE: 1:50 @ A1

DATE: 29/10/2021

DRAWING No: D/2021/293

©