

ALL DIMENSIONS ARE APPROXIMATE AND ARE TO BE CONFIRMED ON SITE

THIS SCAFFOLD HAS BEEN DESIGNED USING TG20:21

THE SCAFFOLD'S WILL ERECT THE SCAFFOLDING IN ACCORDANCE WITH THE REQUIREMENTS OF GUIDANCE NOTE SG4:15

CAM REGULATIONS 2015.

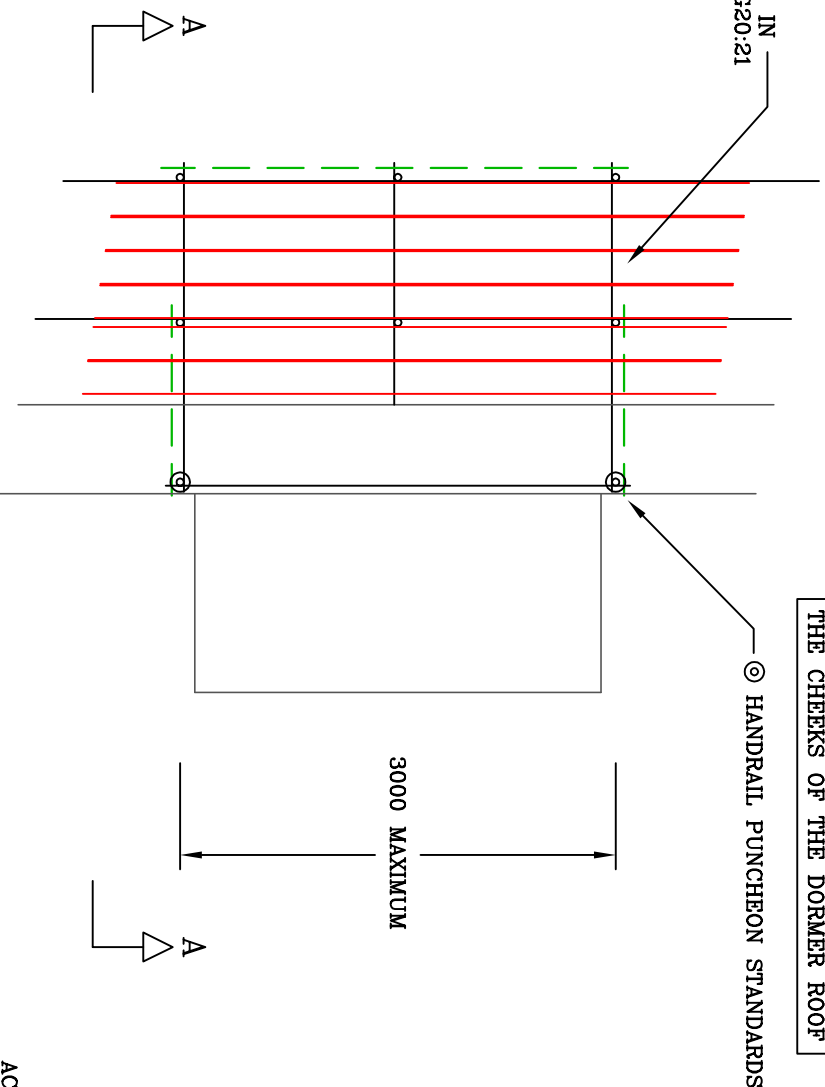
THE CONSTRUCTION (DESIGN AND MANAGEMENT) REGULATIONS 2015, REQUIRE THAT WE MAKE CUSTOMERS AWARE OF THEIR DUTIES IMPOSED BY THE REGULATIONS. GUIDANCE ON YOUR DUTIES ARE PUBLISHED BY THE SHE IN THE FORM OF AN APPROVED CODE OF PRACTICE.



HANDRAILS ARE NOT REQUIRED FOR THE CHEEKS OF THE DORMER ROOF

CLASS "A" HANDRAILS IN ACCORDANCE WITH BSEN 13374
MAXIMUM HORIZONTAL LOAD = 0.3KN
MAXIMUM VERTICAL LOAD = 1.25KN

ACCESS SCAFFOLDING IN ACCORDANCE WITH TG20:21



PLAN LAYOUT

THIS SCAFFOLDING IS NOT TO BE SHEETED

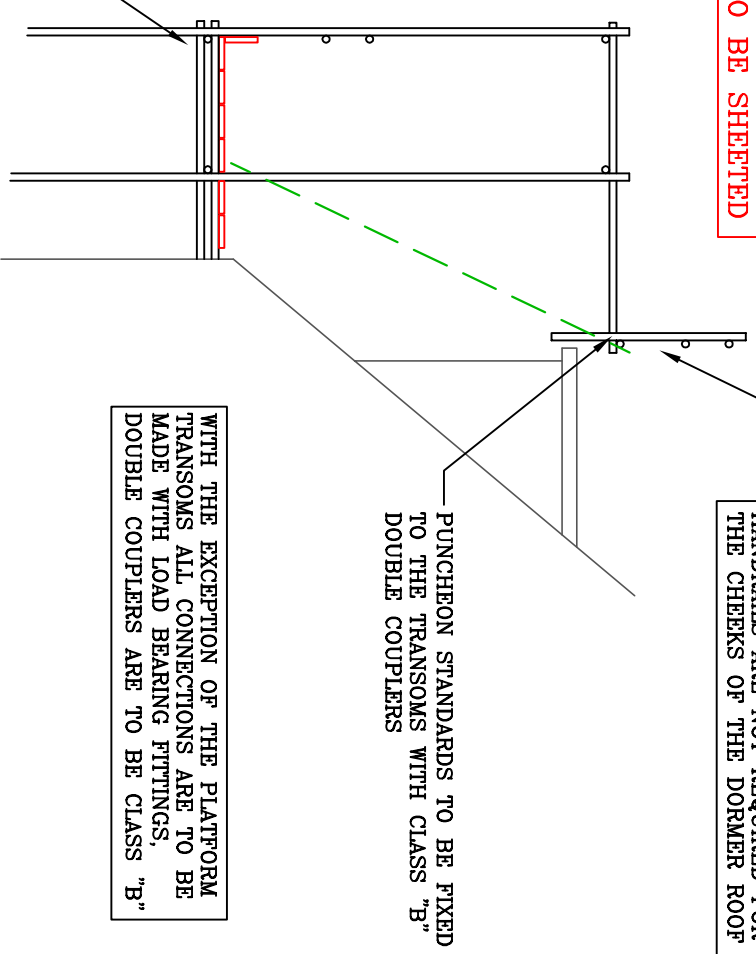
THE MAXIMUM GAP BETWEEN THE LEDGERS IS NOT TO EXCEED 470mm

HANDRAILS ARE NOT REQUIRED FOR THE CHEEKS OF THE DORMER ROOF

PUNCHEON STANDARDS TO BE FIXED TO THE TRANSOMS WITH CLASS "B" DOUBLE COUPLERS

WITH THE EXCEPTION OF THE PLATFORM TRANSOMS ALL CONNECTIONS ARE TO BE MADE WITH LOAD BEARING FITTINGS, DOUBLE COUPLERS ARE TO BE CLASS "B"

ACCESS SCAFFOLDING IN ACCORDANCE WITH TG20:21



ELEVATION A-A

CAD SCAFF LTD

REGISTRATION No: 06510282

REGISTERED OFFICE: 32 HIGH STREET, WALL HEATH, KINGSWINFORD, WEST MIDLANDS, DY6 0HB.

TELEPHONE: 01902 677 014
MOBILE: 07794 235 597
EMAIL: design@cadscalf.co.uk

TITLE:

TYPICAL CLASS "A" HANDRAILS FOR FLAT ROOF DORMERS

PREPARED ON BEHALF OF: BARRATT DEVELOPMENTS PLC.

DRAWN: I WILSON

SCALE: 1:50 @ A3

DATE: 29/10/2021

DRAWING No: D/2021/284

