

GENERAL NOTES

- A This drawing is confidential and is the exclusive property of BARRATT DEVELOPMENTS PLC. No unauthorised use, copy or disclosure is to be made and it is to be returned upon request.
- B Construct in full compliance with TGD008 unless noted otherwise.
- C Scaffold built from steel tubes and steel fittings conforming to BS EN39 & BS EN74 unless noted otherwise.
- D All timber scaffold boards used are to be 225mm x 38mm thick in accordance with BS2482 unless noted otherwise.
- E Scaffold to be constructed using load bearing fittings throughout, except when fixing intermediate beams directly below platform levels and securing boards or loadboards.
- F This drawing has been prepared from details supplied to us by the engineer/client, who should check that we have correctly interpreted his requirements and that all loadings, dimensions, details, and erection sequences are correct. It is the responsibility of the engineer/client to provide a written prior reference to design office.
- G The client is to prepare and ensure that any foundations/props are suitable for supporting the loads imposed upon it by the scaffold including its work load.
- H No sheeting, wind protection or fans, (unless already shown) are to be added to the scaffold structure detailed on this drawing without prior reference to the design office.
- I The scaffold is to be constructed using load bearing fittings throughout, except when fixing intermediate beams directly below platform levels and securing boards or loadboards.
- J The scaffold is to be constructed using load bearing fittings throughout, except when fixing intermediate beams directly below platform levels and securing boards or loadboards.
- K No ties or braces are to be removed or any modifications to be made to the scaffold without prior reference.
- L The engineer/client is to design, supply and fix all necessary quality equipment including but not limited to, shoring, timber beams, steel joists, and is to ensure that such quality equipment is capable of safely transmitting the loads to the scaffold tubes.
- M The engineer/client will be responsible for setting out and final levelling of scaffolding or similar equipment used as a system of support.
- N All dimensions are as stated or as calculated. Drawings must not be scaled.
- O This drawing has been prepared on the assumption that all loads will be applied only to the tubes unless specifically stated otherwise.
- P All working platforms must at all times be in compliance with relevant statutory regulations.
- R The Construction Design & Management Regulations 2007 require that we make the client aware of his duties under the above mentioned regulations. These duties are detailed in the approved code of practice 'Managing Construction for Health & Safety'. Any queries should be addressed to the Design Office.

SPECIAL NOTES:

1. CLIENT IS TO CHECK & AGREE PRIOR TO ERECTION THAT THE SCAFFOLD DESIGN IS SUITABLE FOR REQUIREMENTS.
2. THE CLIENT IS TO CHECK & ENSURE THAT ALL EXISTING FOUNDATIONS FROM THE SCAFFOLD PRIOR TO ERECTION.
3. ALL COUPLERS ARE TO BE LOAD BEARING EXCEPT BOARD BEARERS.
4. ALL BOARDED LIFTS TO BE FITTED WITH TOEBOARDS AND GUARDRAILS TO STATUTORY REGULATIONS.
5. CHECK FITTINGS ARE TO BE LOCATED IN POSITIONS SHOWN THUS: X
6. LASH DOWN ALL SHORT BOARDS AND ANY BOARDS IN EXPOSED OR WINDY CONDITIONS TO (IF IN DOUBT CONTACT DESIGN OFFICE)
7. DIMENSIONS MAY VARY DUE TO SITE CONDITIONS. (IF IN DOUBT CONTACT DESIGN OFFICE)
8. ALL STANDARDS TO BE SEATED ON BASE PLATES AND SOLE BOARDS WHERE REQUIRED.
9. CONSTRUCTION RISK ASSESSMENT, MANUAL HANDLING ASSESSMENT AND METHOD STATEMENT REQUIRED PRIOR TO ERECTION TAKING PLACE.
10. SCAFFOLD TO BE ERECTED IN ACCORDANCE WITH: SC4+10, OR SPECIFIC RISK ASSESSMENT.

MAX LOAD ON ROOF TRUSS SUPPORT SCAFFOLD = 1.0 Tonne

WORKING DRG
ISSUED FOR CONSTRUCTION

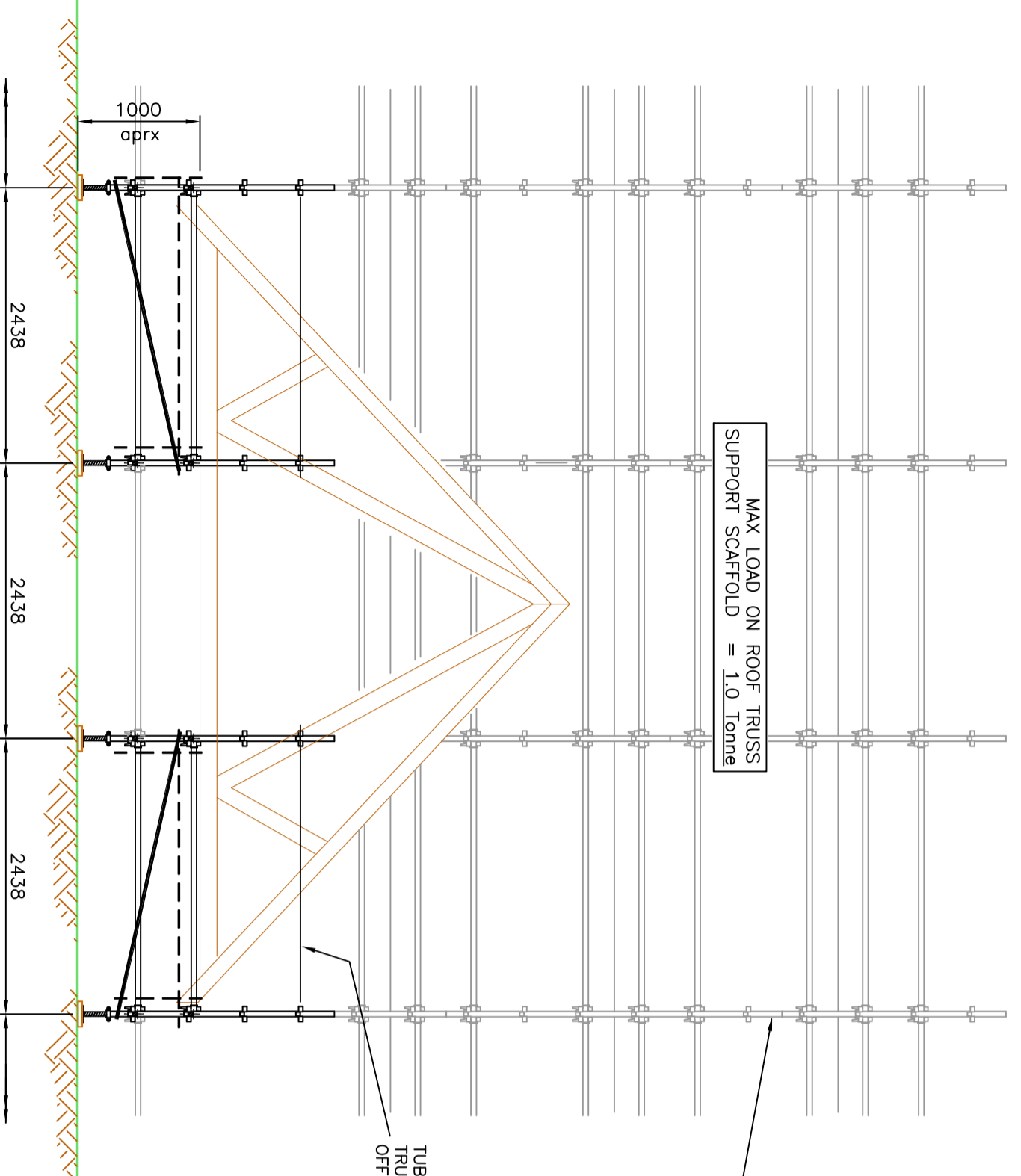


BARRATT DEVELOPMENTS PLC

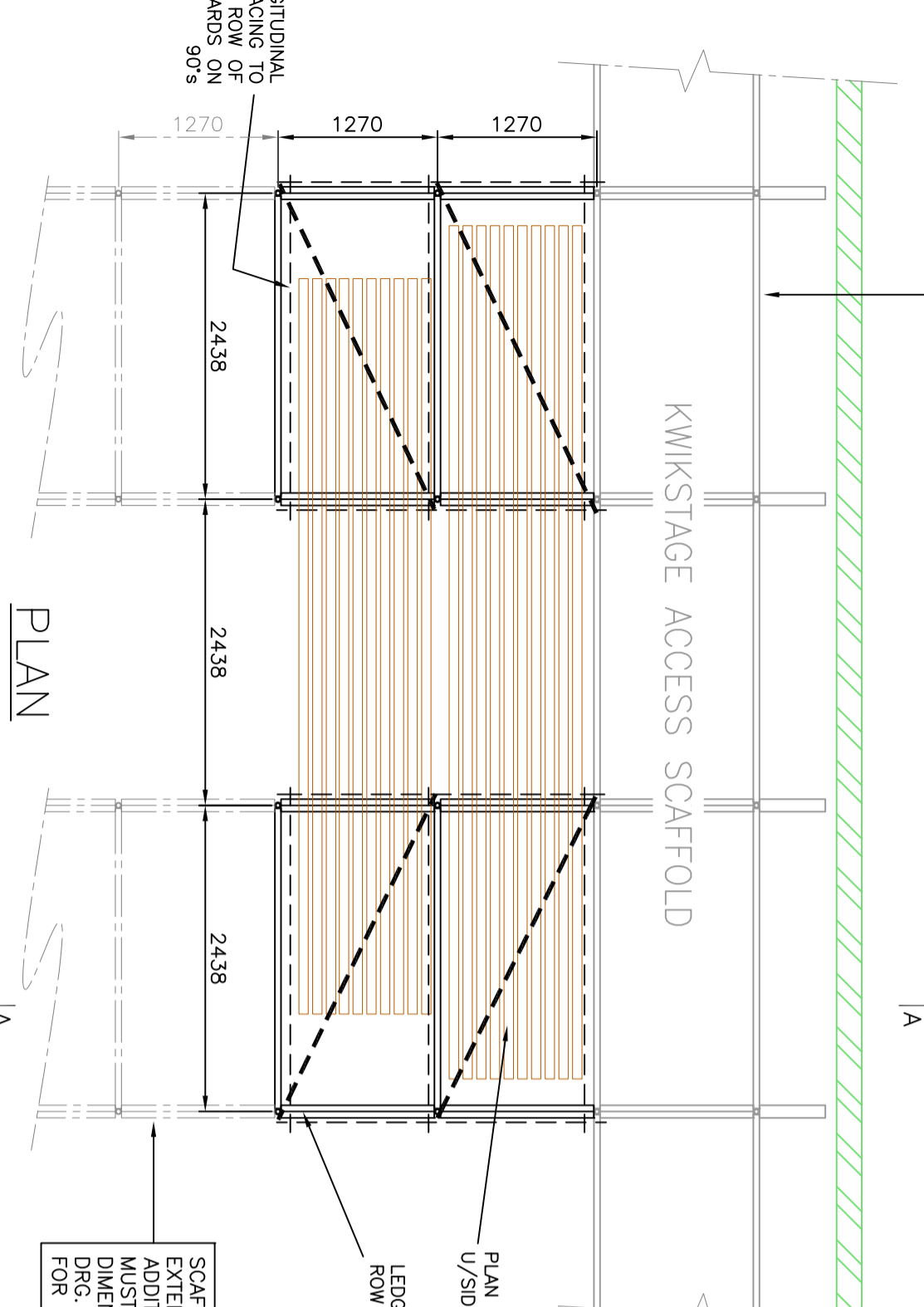
CLIENT BARRATT DEVELOPMENTS PLC
SITE VARIES
TITLE GENERIC KWIKSTAGE STORAGE RACK FOR TIMBER ROOF TRUSSES

PJB
SCAFFOLD DESIGN LTD.
P.B. SCAFFOLD DESIGN LTD.
ICON BUSINESS CENTRE
4100 PARK APPROACH,
THORPE PARK, COLTON,
LEEDS, LS16 8GB
T: 0113 3970411
M: 07828594822
E: pbscaffoldsdesign@btinternet.com

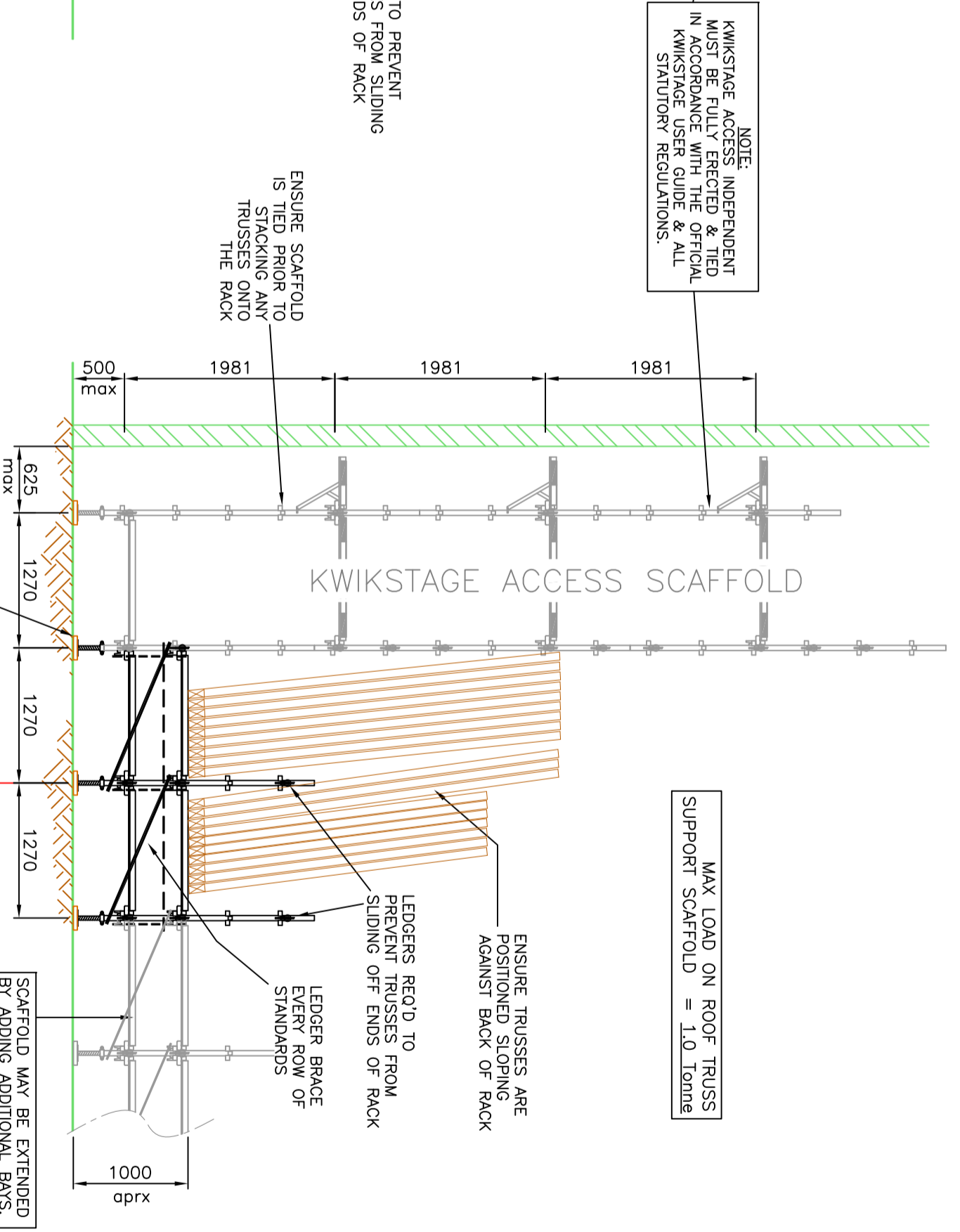
DATE: 5/7/12
SCALE: (A2) 1:50
DRAWN BY: R.D.P.
APPROVED BY: P.J.B.
DRAWING No. BRT2002-1



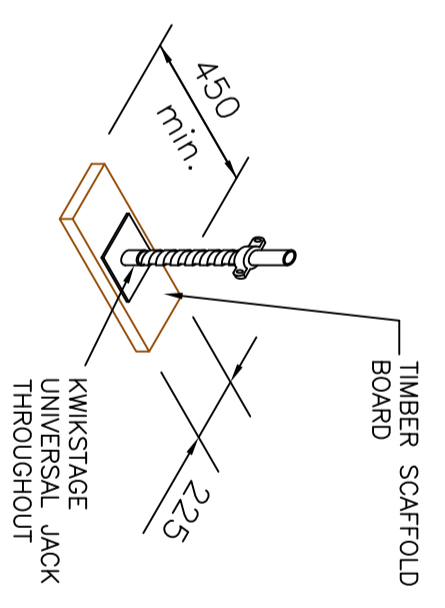
ELEVATION



PLAN



SECTION A-A



TYPICAL SPREADER DETAIL
SOLID GROUND
(MAX - 210kN/m² GRD BEARING PRESSURE)

NOTE:
SCAFFOLD IS TO BE ERECTED USING GENUINE KWIKSTAGE PARTS IN FULL ACCORDANCE WITH THE OFFICIAL KWIKSTAGE USER MANUAL, SG4 & ALL STATUTORY REGULATIONS.

SCAFFOLD MAY BE EXTENDED BY ADDING ADDITIONAL BAYS. NEW BAYS MUST NOT EXCEED DIMENSIONS SHOWN ON DRG. THE ALLOWABLE LOAD FOR EACH NEW BAY = 500kg

PLAN BRACING TO U/SIDE OF TOP LIFT
LEDGER BRACE EVERY ROW OF STANDARDS