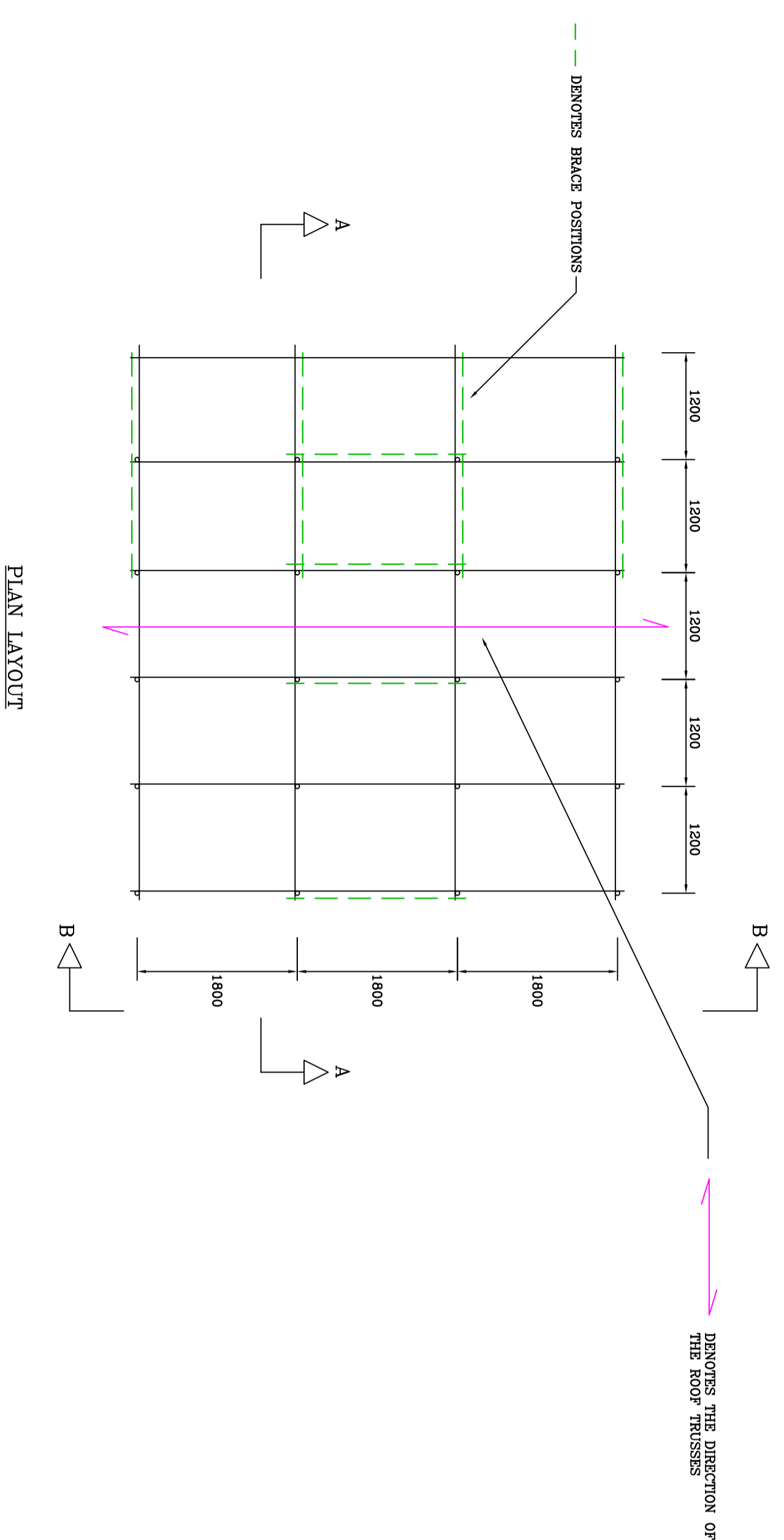


GENERAL NOTES.

1. THIS DRAWING IS CONFIDENTIAL AND THE EXCLUSIVE PROPERTY OF CAD SCAFF LTD. NO UNAUTHORISED USE, COPY OR DISCLOSURE IS TO BE MADE.
2. THIS DRAWING HAS BEEN PREPARED FROM INFORMATION SUPPLIED BY THE CLIENT AND THE CONTRACTOR. IT IS THE DUTY OF THE CONTRACTOR TO CHECK THAT HIS REQUIREMENTS HAVE BEEN CORRECTLY INTERPRETED, AND THAT ALL LOADINGS, DIMENSIONS, LIFT HEIGHTS, BAY SIZES, THE POSITIONS AND TYPE, ERECTION/STRIKING SEQUENCES ARE AS REQUIRED AND PRACTICABLE.
3. THE FOLLOWING DRAWINGS HAVE BEEN USED TO PREPARE THIS SCHEME:

CDM REGULATIONS 2015.
THE CONSTRUCTION (DESIGN AND MANAGEMENT) REGULATIONS 2015, REQUIRE THAT THE MAIN CONTRACTOR MANAGE ON SITE DUTIES ARE PUBLISHED BY THE HSE IN THE FORM OF AN APPROVED CODE OF PRACTICE.

THE SCAFFOLDERS WILL ERECT THE SCAFFOLDING IN ACCORDANCE WITH THE REQUIREMENTS OF GUIDANCE NOTE S64:15
THIS SCAFFOLD HAS BEEN DESIGNED USING TG20:21
ALL DIMENSIONS ARE APPROXIMATE AND ARE TO BE CONFIRMED ON SITE

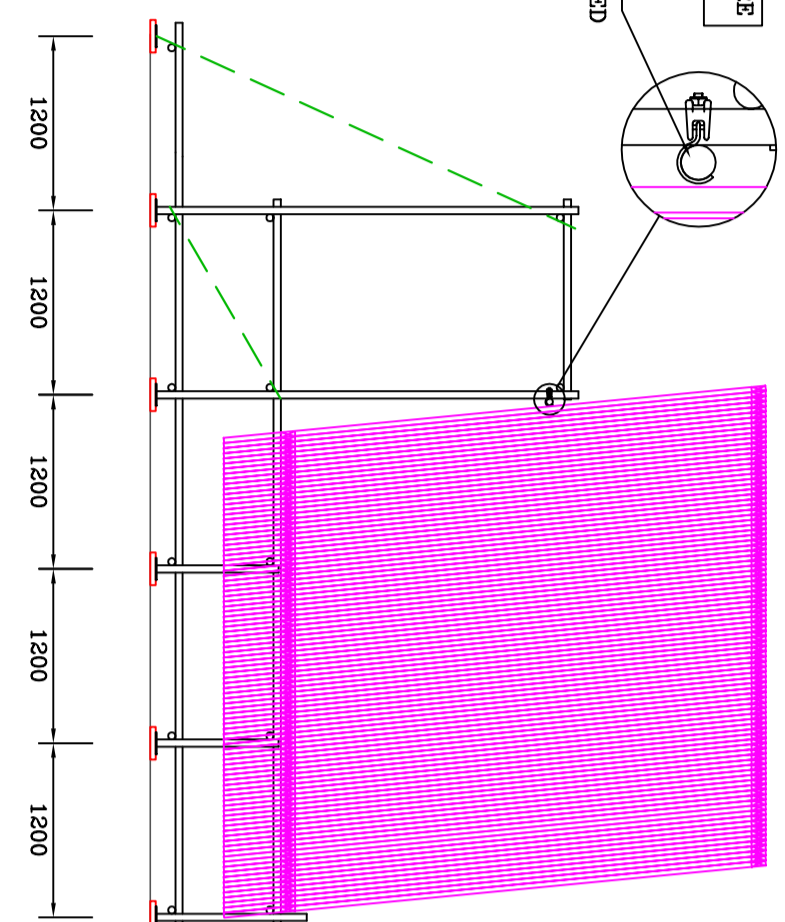


PLAN LAYOUT

THIS SCAFFOLD HAS BEEN DESIGNED USING THE TRUSS SELF WEIGHT OF 922KG PER TRUSS

UNLESS NOTED OTHERWISE ALL CONNECTIONS ARE TO BE MADE WITH LOAD BEARING FITTINGS

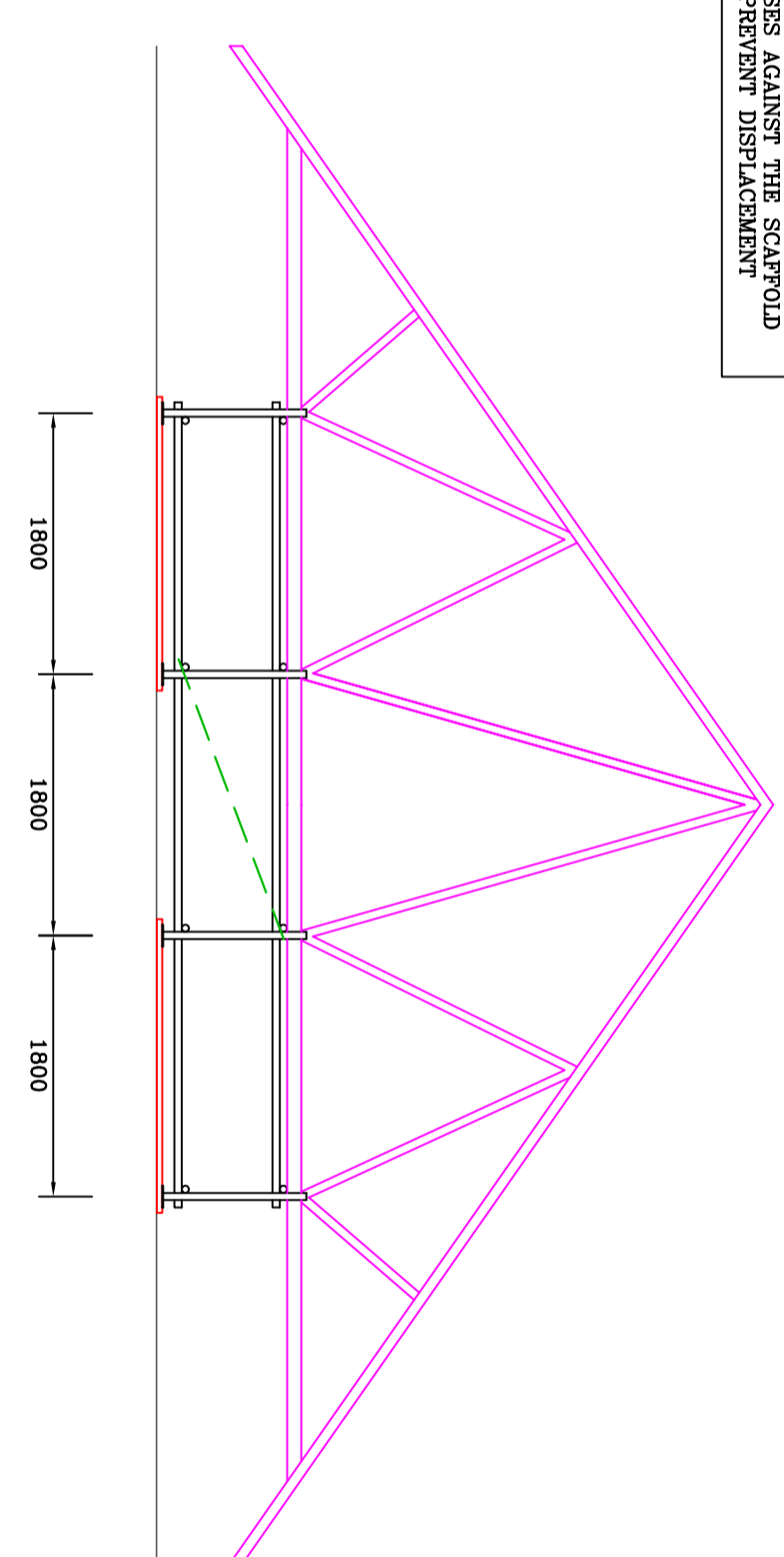
LEDGER ADJACENT TO THE ROOF TRUSSES IS TO BE FIXED WITH SCAFFOLD CLIPS



SECTION A-A

THE LIFT HEIGHT IS TO BE AGREED ON SITE TO SUIT THE ROOF TRUSSES, MAXIMUM LIFT HEIGHT 1500mm

THE MAIN CONTRACTOR IS TO PROVIDE AN ADEQUATE METHOD OF RESTRAINING THE ROOF TRUSSES AGAINST THE SCAFFOLD FRAME TO PREVENT DISPLACEMENT



ELEVATION B-B

3. UNLESS NOTED OTHERWISE THE SCAFFOLD IS DESIGNED USING TG20:21.
4. THE CUSTOMER IS RESPONSIBLE FOR ENSURING THAT THE FOUNDATIONS AND THE POSITIONS PROVIDED FOR THE SCAFFOLDING ARE ADEQUATE TO SAFELY SUPPORT THE LOADS SHOWN ON THIS DRAWING OR ASSOCIATED CALCULATIONS.
5. NO ALTERATION IS TO BE MADE TO THE STRUCTURE DETAILED ON THIS DRAWING.
6. THE CUSTOMER IS RESPONSIBLE FOR THE SETTING OUT OF THE SCAFFOLDING.
7. THE CUSTOMER IS RESPONSIBLE FOR OBTAINING ALL PERMITS AND PERMISSIONS PRIOR TO COMMENCING WORK.
8. ALL DIMENSIONS ARE IN MM.
9. UNLESS NOTED OTHERWISE THE MAXIMUM LIFT HEIGHT MUST NOT EXCEED 2000MM.
10. THE MAXIMUM IMPOSED LOAD ACTING ON THE MAIN PLATFORM MUST NOT EXCEED AS NOTED KV/M²
11. UNLESS NOTED OTHERWISE ALL CONNECTIONS OTHER THAN BOARDED PLATFORMS WILL BE MADE USING LOAD BEARING COUPLERS.
12. ALL LADDERS ARE TO BE FIXED SECURELY. IT IS RECOMMENDED THAT LADDERS ARE FIXED AT AN ANGLE OF 75° OR 4 VERTICAL TO 1 HORIZONTAL. IT IS RECOMMENDED THAT THE LADDER PRODUCTS 1050MM ABOVE THE LANDING PLATFORM.
13. MODULAR BEAMS ARE TO BE LAGED AND BRACED IN ACCORDANCE WITH THE MANUFACTURERS RECOMMENDATIONS
14. ALL SYSTEM SCAFFOLDING, INCLUDING STAIR TOWERS ARE TO BE ERECTED IN ACCORDANCE WITH THE MANUFACTURERS RECOMMENDATIONS AND BE FIT FOR THE PURPOSES THAT THEY ARE INTENDED FOR
15. SUPPLEMENTARY/CHECK FITTING POSITIONS ARE SHOWN THUS: X ON THE DRAWING
16. NO TEMPORARY ROOF CAN BE MADE WATERTIGHT.
17. A SNOW MANAGEMENT SYSTEM IS TO BE IMPLEMENTED BY THE CUSTOMER, WHERE THE CUSTOMER IS UNABLE TO IMPLEMENT SUCH A MANAGEMENT SYSTEM THEN THEY SHOULD INFORM CAD SCAFF WHO WILL DESIGN FOR SNOW LOADING.
18. WHEN KNOWLEDGE OR ANCHORAGE IS SPECIFIED ON THE DRAWING, IT MUST BE INSTALLED AT THE EARLIEST CONVENIENT OPPORTUNITY, AND MUST BE COMPLETED PRIOR TO SHEETING.
19. THE CUSTOMER IS TO ENSURE THAT A SAFE SYSTEM OF WORKING IS ADOPTED AT ALL STAGES OF THE SCAFFOLDING ERECTION AND DISMANTLE
20. THE CUSTOMER IS TO PROVIDE AN OPERATIONAL RISK ASSESSMENT WHICH IS TO INCLUDE FOR HAZARDS ASSOCIATED WITH THE ERECTION OF SCAFFOLDING SHOWN ON THIS DRAWING

REV	DESCRIPTION	BY	DATE

CAD SCAFF LTD

REGISTRATION No: 06510282
REGISTERED OFFICE: 32 HIGH STREET, WALL HEATH,
KINGSWINFORD, WEST MIDLANDS, DY6 0HB.
TELEPHONE: 01902 677 014
MOBILE: 07794 235 597
EMAIL: design@cadscalf.co.uk

PREPARED ON BEHALF OF: BARRATT DEVELOPMENTS PLC.

TITLE:
TYPICAL TUBE AND FITTING ROOF TRUSS STORAGE RACK

DRAWN: I WILSON

SCALE: 1:50 @ A1

DATE: 29/10/2021

DRAWING No: D/2021/270