

GENERAL NOTES.

1. THIS DRAWING IS CONFIDENTIAL AND THE EXCLUSIVE PROPERTY OF CAD SCAFF LTD. NO UNAUTHORISED USE, COPY OR DISCLOSURE IS TO BE MADE.
2. THIS DRAWING HAS BEEN PREPARED FROM INFORMATION SUPPLIED TO US BY OR ON BEHALF OF THE CONTRACTOR WHO SHOULD CHECK THAT HIS REQUIREMENTS HAVE BEEN CORRECTLY INTERPRETED, AND THAT ALL LOADINGS, DIMENSIONS, LIFT HEIGHTS, BAY SIZES, THE POSITIONS AND TYPE, ERECTION/STRICKING SEQUENCES ARE AS REQUIRED AND PRACTICABLE.
3. THE FOLLOWING DRAWINGS HAVE BEEN USED TO PREPARE THIS SCHEME:

3. UNLESS NOTED OTHERWISE THE SCAFFOLD IS DESIGNED USING TG2021.

4. THE CUSTOMER IS RESPONSIBLE FOR ENSURING THAT THE FOUNDATIONS AND THE POSITIONS PROVIDED FOR THE SCAFFOLDING ARE ADEQUATE TO SAFELY SUPPORT THE LOADS SHOWN ON THIS DRAWING OR ASSOCIATED CALCULATIONS.

5. NO ALTERATION IS TO BE MADE TO THE STRUCTURE DETAILED ON THIS DRAWING.

6. THE CUSTOMER IS RESPONSIBLE FOR THE SETTING OUT OF THE SCAFFOLDING.

7. THE CUSTOMER IS RESPONSIBLE FOR OBTAINING ALL PERMITS AND PERMISSIONS PRIOR TO COMMENCING WORK.

8. ALL DIMENSIONS ARE IN MM.

9. UNLESS NOTED OTHERWISE THE MAXIMUM LIFT HEIGHT MUST NOT EXCEED 2000MM.

10. THE MAXIMUM IMPOSED LOAD ACTING ON THE MAIN PLATFORM MUST NOT EXCEED **AS NOTED** KN/M²

11. UNLESS NOTED OTHERWISE ALL CONNECTIONS OTHER THAN BOARDED PLATFORMS WILL BE MADE USING LOAD BEARING COUPLERS.

12. ALL LADDERS ARE TO BE FIXED SECURELY. IT IS RECOMMENDED THAT LADDERS ARE FIXED AT AN ANGLE OF 75° OR 4 VERTICAL TO 1 HORIZONTAL. IT IS RECOMMENDED THAT THE LADDER PROJECTS 1050MM ABOVE THE LANDING PLATFORM.

13. MODULAR BEAMS ARE TO BE LACED AND BRACED IN ACCORDANCE WITH THE MANUFACTURERS RECOMMENDATIONS

14. ALL SYSTEM SCAFFOLDING, INCLUDING STAIR TOWERS ARE TO BE ERECTED IN ACCORDANCE WITH THE MANUFACTURERS RECOMMENDATIONS AND BE FIT FOR THE PURPOSED THAT THEY ARE INTENDED FOR

15. SUPPLEMENTARY/CHECK FITTING POSITIONS ARE SHOWN THIS: **X** ON THE DRAWING

16. NO TEMPORARY ROOF CAN BE MADE WATERTIGHT.

17. A SNOW MANAGEMENT SYSTEM IS TO BE IMPLEMENTED BY THE CUSTOMER WHERE THE CUSTOMER IS UNABLE TO IMPLEMENT SUCH A MANAGEMENT SYSTEM THEN THEY SHOULD INFORM CAD SCAFF WHO WILL DESIGN FOR SNOW LOADING.

18. WHEN KENTLEDGE OR ANCHORAGE IS SPECIFIED ON THE DRAWING, IT MUST BE INSTALLED AT THE EARLIEST CONVENIENT OPPORTUNITY, AND MUST BE COMPLETED PRIOR TO SHEETING.

19. THE CUSTOMER IS TO ENSURE THAT A SAFE SYSTEM OF WORKING IS ADOPTED AT ALL STAGES OF THE SCAFFOLDING ERECTION AND DISMANTLE

20. THE CUSTOMER IS TO PROVIDE AN OPERATIONAL, RISK ASSESSMENT WHICH IS TO INCLUDE FOR HAZARDS ASSOCIATED WITH THE ERECTION OF SCAFFOLDING SHOWN ON THIS DRAWING

CDM REGULATIONS 2015.

THE CONSTRUCTION (DESIGN AND MANAGEMENT) REGULATIONS 2015, REQUIRE THAT WE MAKE CUSTOMERS AWARE OF THEIR DUTIES AND PUBLISHED BY THE HSE IN THE FORM OF AN APPROVED CODE OF PRACTICE.

THE SCAFFOLDERS WILL ERECT THE SCAFFOLDING IN ACCORDANCE WITH THE REQUIREMENTS OF GUIDANCE NOTE SG4:15

THIS SCAFFOLD HAS BEEN DESIGNED USING TG2021

ALL DIMENSIONS ARE APPROXIMATE AND ARE TO BE CONFIRMED ON SITE

--- DENOTES THE BRACING POSITIONS IF BRACING IS PROVIDED

B

DENOTES THE DIRECTION OF THE PLATFORM BOARDS

A

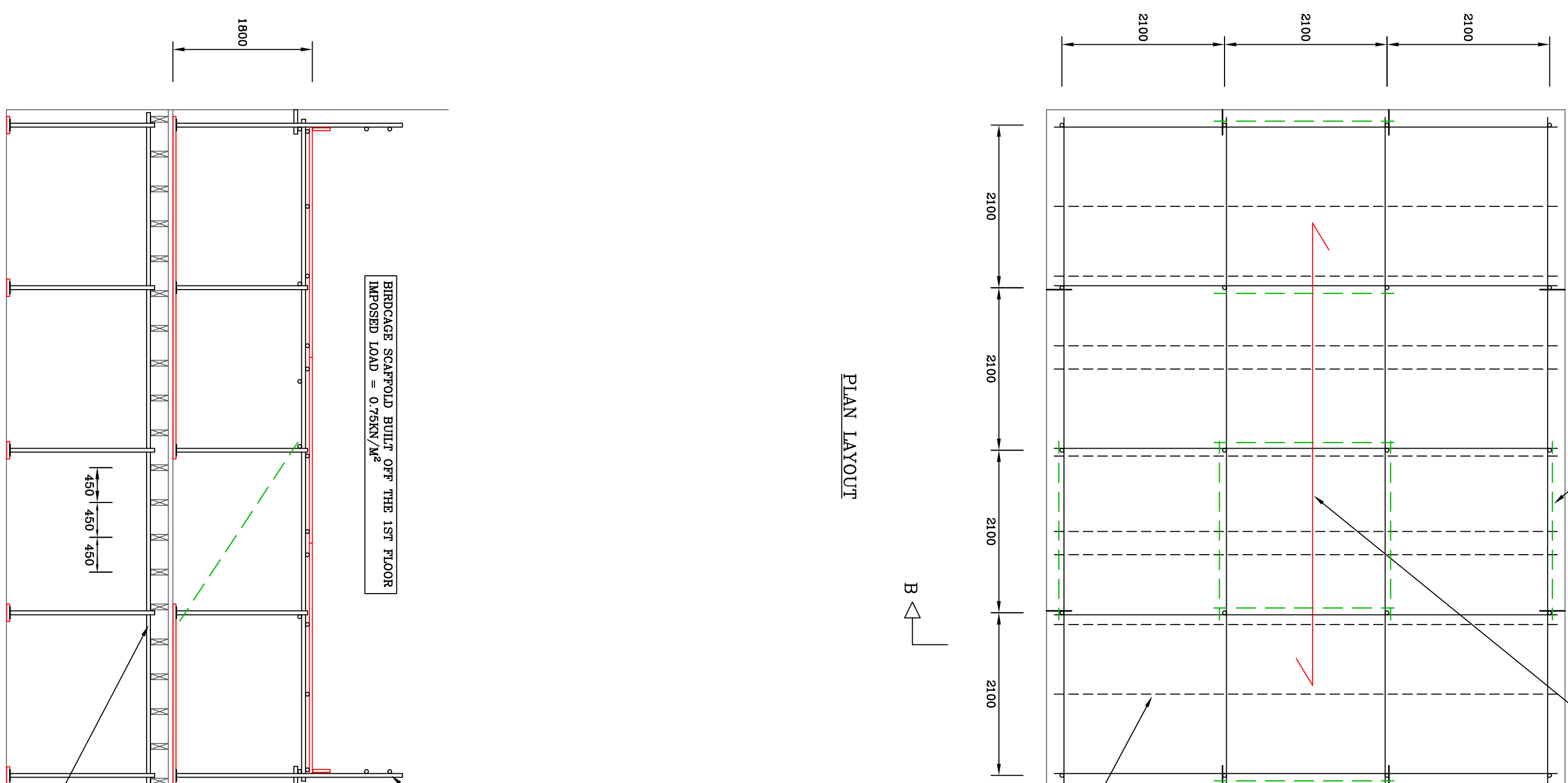
A

BUTT TRANSOM TUBES AGAINST THE WALLS FIXED TO THE STANDARDS WITH DOUBLE COUPLERS CAN BE OMITTED IF BRACING IS PROVIDED

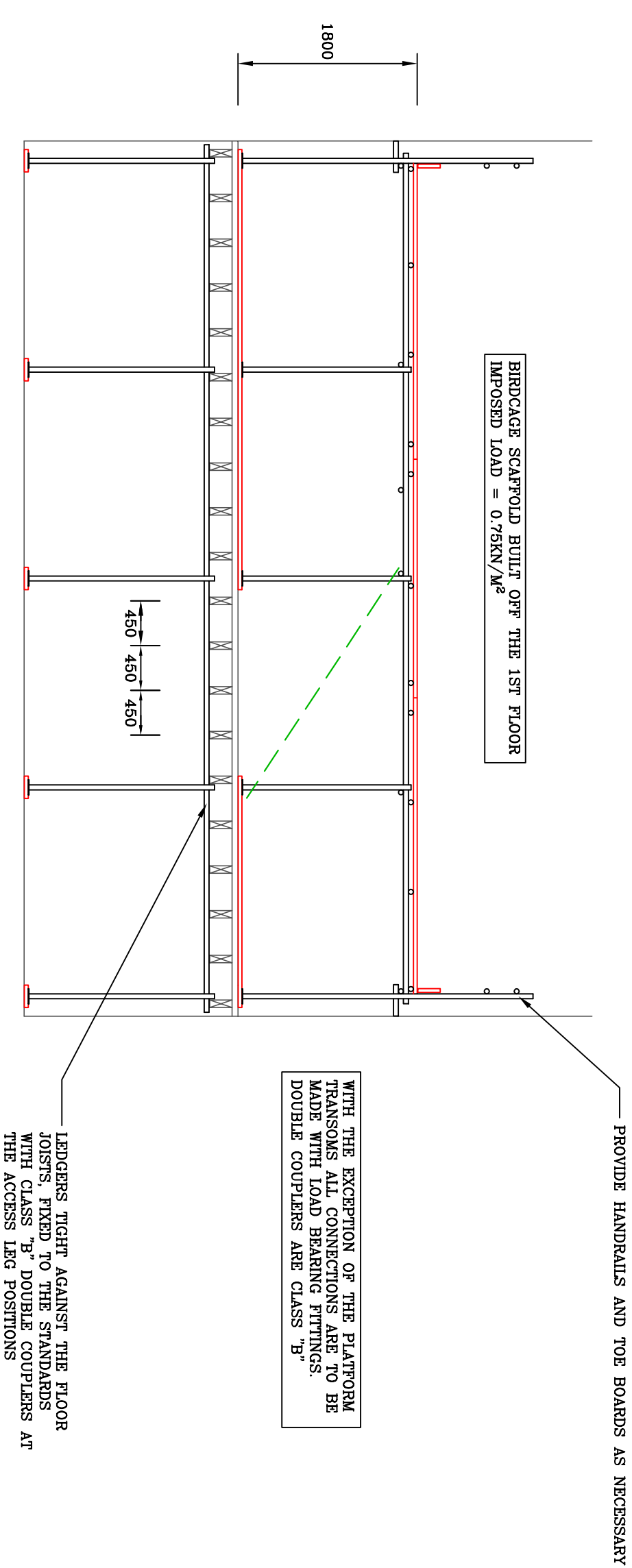
THE PLATFORM TRANSOMS ARE AT 1200mm CENTRES MAXIMUM, THE EXACT POSITION OF THE PLATFORM TRANSOMS WILL DEPEND ON THE LENGTH OF BRASSES USED AND ARE INDICATED BY THE

B

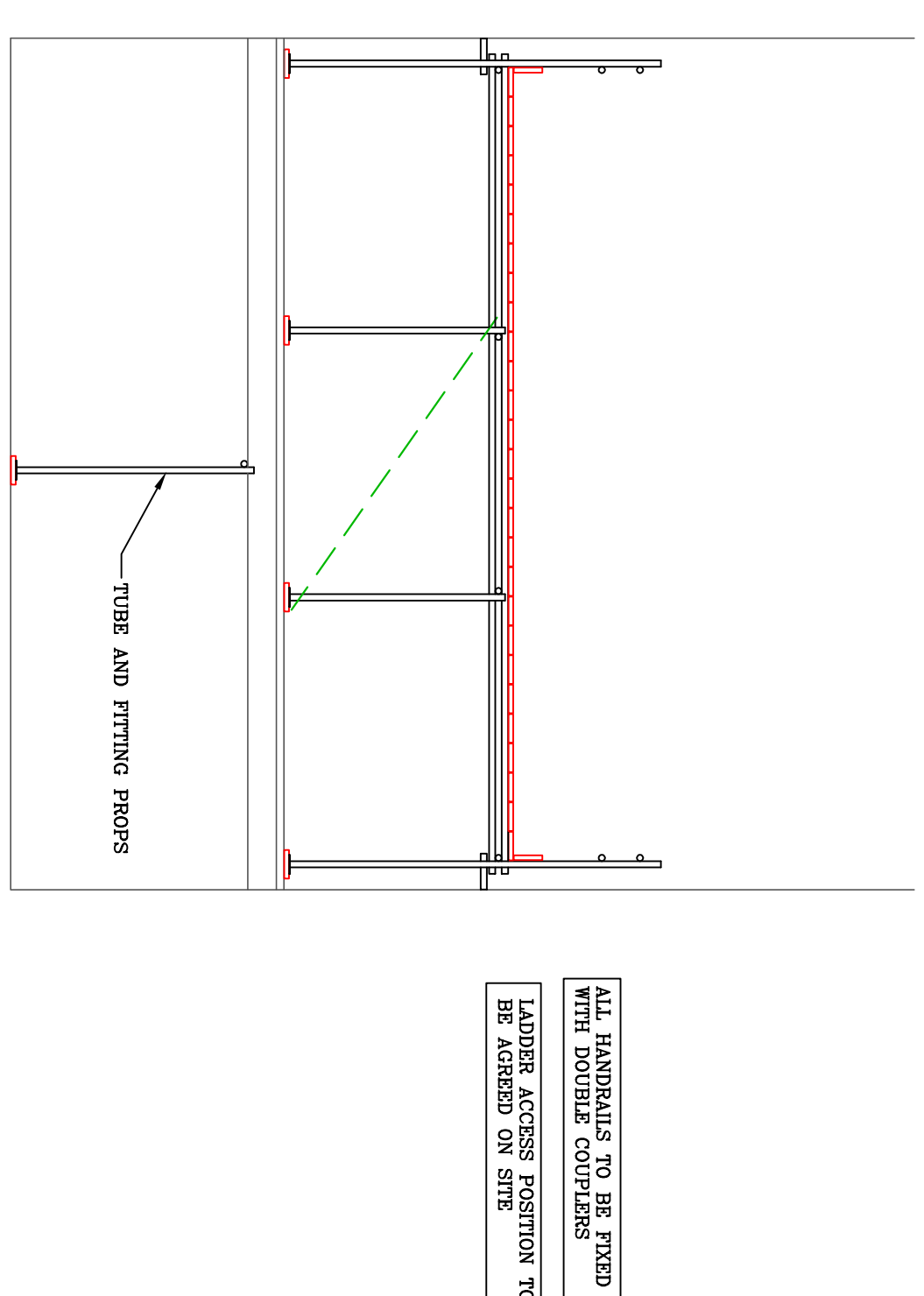
PLAN LAYOUT



SECTION A-A



SECTION B-B



REV	DESCRIPTION	BY	DATE

CAD SCAFF LTD

REGISTRATION No: 06510282
 REGISTERED OFFICE: 32 HIGH STREET, WALL HEATH,
 KINGSMINFORD, WEST MIDLANDS, D16 0HB.
 TELEPHONE: 01902 6777 014
 MOBILE: 07794 235 597
 EMAIL: design@cadscraft.co.uk

PREPARED ON BEHALF OF: BARRATT DEVELOPMENTS PLC.

TITLE:

TYPICAL INTERNAL BIRDCAGE ACCESS SCAFFOLDING.

DRAWN: I WILSON

SCALE: 1:50 @ A1 DATE: 29/10/2021

DRAWING No: D/2021/272