

GENERAL NOTES.

1. THIS DRAWING IS CONFIDENTIAL AND THE EXCLUSIVE PROPERTY OF CAD SCAFF LTD. NO UNAUTHORISED USE, COPY OR DISCLOSURE IS TO BE MADE.
2. THIS DRAWING HAS BEEN PREPARED FROM INFORMATION SUPPLIED TO US BY OUR BEHALF THE CONTRACTOR, WHO SHOULD BE RESPONSIBLE FOR CHECKING THAT ALL DIMENSIONS, LIFT HEIGHTS, BAY SIZES, THE POSITIONS AND TYPE, ERECTION/STRIKING SEQUENCES ARE AS REQUIRED AND PRACTICABLE.
3. THE FOLLOWING DRAWINGS HAVE BEEN USED TO PREPARE THIS SCHEME:

CDM REGULATIONS 2015.  
THE CONSTRUCTION (DESIGN AND MANAGEMENT) REGULATIONS 2015, REQUIRE THAT WE MAKE CUSTOMERS AWARE OF THEIR DUTIES UNDER THE REGULATIONS. GUIDANCE ON YOUR DUTIES ARE SET OUT IN THE HSE IN THE FORM OF AN APPROVED CODE OF PRACTICE.

THE SCAFFOLDERS WILL EXPECT THE SCAFFOLDING IN ACCORDANCE WITH THE REQUIREMENTS OF GUIDANCE NOTE SG4-15

THIS SCAFFOLD HAS BEEN DESIGNED USING TG2021

ALL DIMENSIONS ARE APPROXIMATE AND ARE TO BE CONFIRMED ON SITE

3. UNLESS NOTED OTHERWISE THE SCAFFOLD IS DESIGNED USING TG2021.

4. THE CUSTOMER IS RESPONSIBLE FOR ENSURING THAT THE FOUNDATIONS AND THE POSITIONS PROVIDED FOR THE SCAFFOLDING ARE ADEQUATE TO SAFELY SUPPORT THE LOADS SHOWN ON THIS DRAWING OR ASSOCIATED CALCULATIONS.
5. NO ALTERATION IS TO BE MADE TO THE STRUCTURE DETAILED ON THIS DRAWING.
6. THE CUSTOMER IS RESPONSIBLE FOR THE SETTING OUT OF THE SCAFFOLDING.
7. THE CUSTOMER IS RESPONSIBLE FOR OBTAINING ALL PERMITS AND PERMISSIONS PRIOR TO COMMENCING WORK.
8. ALL DIMENSIONS ARE IN MM.
9. UNLESS NOTED OTHERWISE THE MAXIMUM LIFT HEIGHT MUST NOT EXCEED 2000MM.
10. THE MAXIMUM IMPOSED LOAD ACTING ON THE MAIN PLATFORM MUST NOT EXCEED **AS NOTED** KN/M<sup>2</sup>
11. UNLESS NOTED OTHERWISE ALL CONNECTIONS OTHER THAN BOARDED PLATFORMS WILL BE MADE USING LOAD BEARING COUPLERS.

12. ALL LADDERS ARE TO BE FIXED SECURELY. IT IS RECOMMENDED THAT LADDERS ARE FIXED AT AN ANGLE OF 75° OR 4 VERTICAL TO 1 HORIZONTAL. IT IS RECOMMENDED THAT THE LADDER PROTECTS 150MM ABOVE THE LANDING PLATFORM.

13. MODULAR BEAMS ARE TO BE LACED AND BRACED IN ACCORDANCE WITH THE MANUFACTURERS RECOMMENDATIONS
14. ALL SYSTEM SCAFFOLDING, INCLUDING STAIR TOWERS ARE TO BE ERECTED IN ACCORDANCE WITH THE MANUFACTURERS RECOMMENDATIONS AND BE FIT FOR THE PURPOSED THAT THEY ARE INTENDED FOR
15. SUPPLEMENTARY/CHECK FITTING POSITIONS ARE SHOWN THIS: **X** ON THE DRAWING

16. NO TEMPORARY ROOF CAN BE MADE WATERTIGHT.

17. A SNOW MANAGEMENT SYSTEM IS TO BE IMPLEMENTED BY THE CUSTOMER WHERE THE CUSTOMER IS UNABLE TO IMPLEMENT SUCH A MANAGEMENT SYSTEM THEN THEY SHOULD INFORM CAD SCAFF WHO WILL DESIGN FOR SNOW LOADING.

18. WHEN KNOWLEDGE OR ANCHORAGE IS SPECIFIED ON THE DRAWING IT MUST BE INSTALLED AT THE EARLIEST CONVENIENT OPPORTUNITY AND MUST BE COMPLETED PRIOR TO SHEETING.

19. THE CUSTOMER IS TO ENSURE THAT A SAFE SYSTEM OF WORKING IS ADOPTED AT ALL STAGES OF THE SCAFFOLDING ERECTION AND DISMANTLE

20. THE CUSTOMER IS TO PROVIDE AN OPERATIONAL RISK ASSESSMENT WHICH IS TO INCLUDE FOR HAZARDS ASSOCIATED WITH THE ERECTION OF SCAFFOLDING SHOWN ON THIS DRAWING

REV	DESCRIPTION	BY	DATE
A	NOTE REGARDING BAND AND PLATE FITTINGS REVISED	IM	7/2/2022

**CAD SCAFF LTD**

REGISTRATION No: 06510292  
REGISTERED OFFICE: 32 HIGH STREET, WALL HEATH, KINGSWINFORD, WEST MIDLANDS, DY6 0HB.  
TELEPHONE: 01902 677 014  
MOBILE: 07794 235 597  
EMAIL: design@cadscraft.co.uk

PREPARED ON BEHALF OF: BARRETT DEVELOPMENTS PLC.

TITLE:

TYPICAL STORAGE PLATFORM ABOVE SITE CONTAINERS

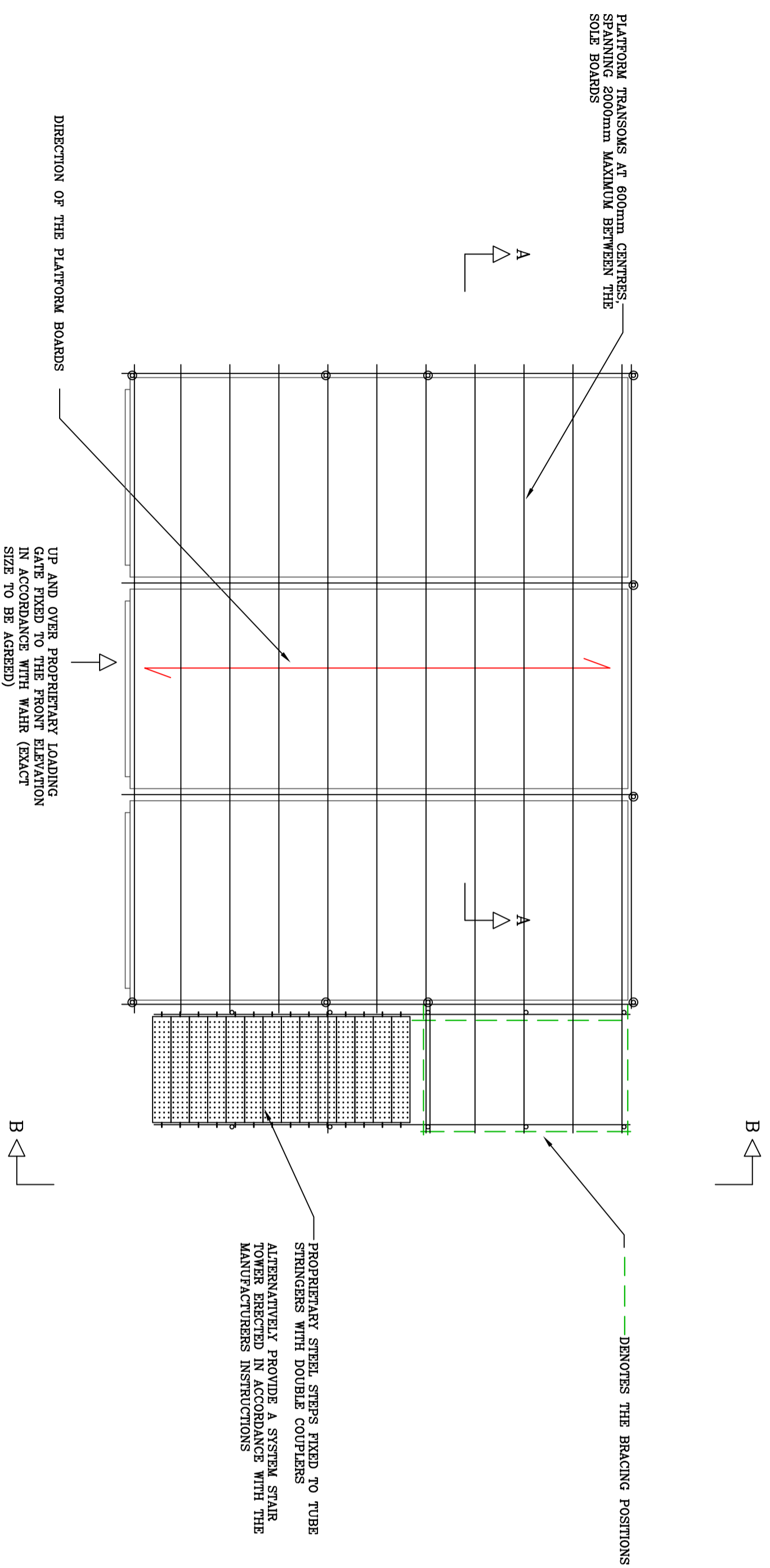
DRAWN: I WILSON

SCALE: 1:50 @ A1

DATE: 29/10/2021

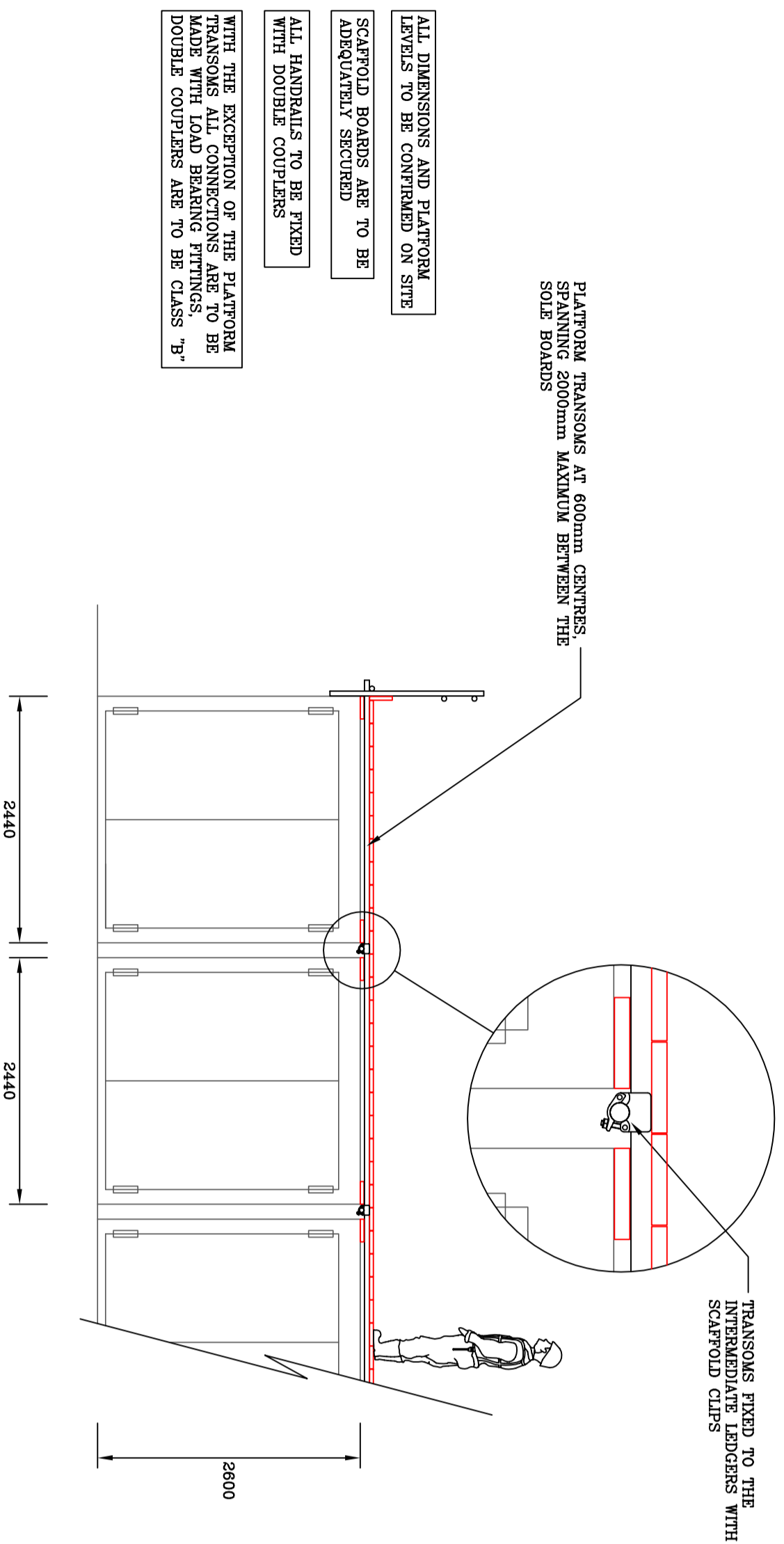
DRAWING No: D/2021/275 Revision A

©

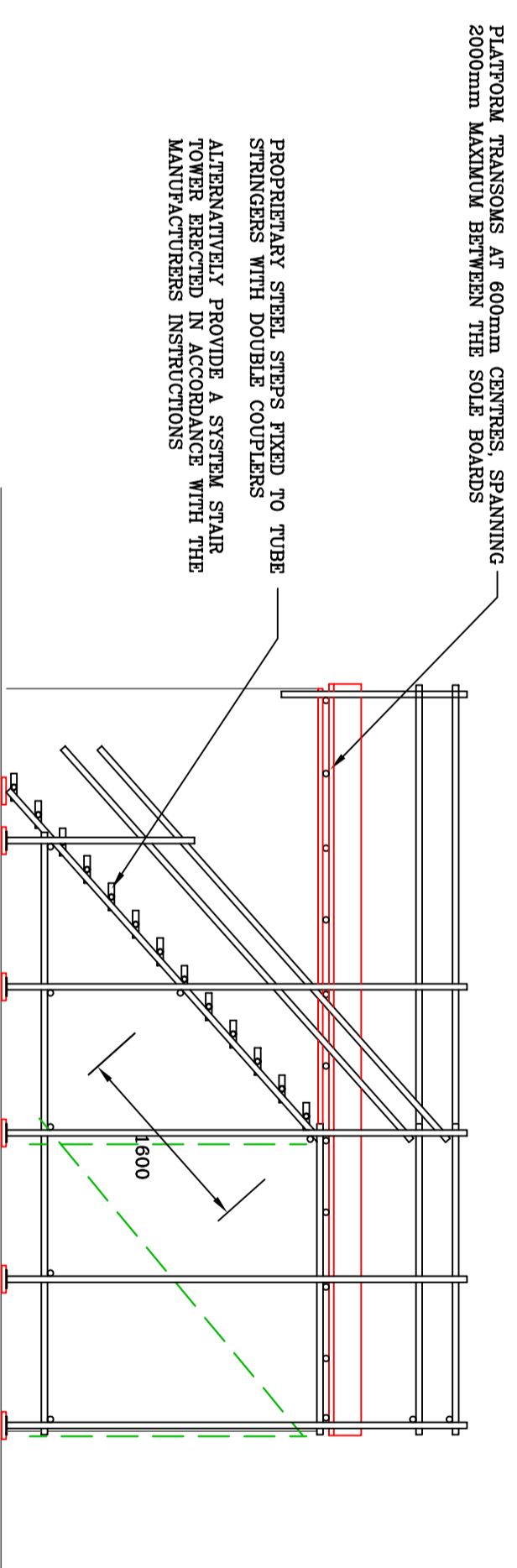


PLAN LAYOUT

THIS SCAFFOLD HAS BEEN DESIGNED USING THE FOLLOWING PARAMETERS FROM TG2021:  
ACCESS SCAFFOLDING IS LOAD CASE 3 = 1 WORKING PLATFORM RATED AT 2.0KN/M<sup>2</sup>  
STAIR TOWER RATED AT 1.0KN/M APPLIED TO ALL STEPS AND LANDINGS  
NOTE THIS PLATFORM DESIGN CAN BE USED FOR SINGLE AND MULTIPLE CONTAINER SPANS



TYPICAL SECTION



ELEVATION B-B